

KINETICS™

1" and 2" Deflection Isolation Hangers Model SRH

- Epoxy Powder Coated Bracket and Spring Coil
- Patented, Self-Centering Cap

US Patent number 5,653,426

Description

Kinetics Model SRH vibration isolation hangers consist of free-standing, large diameter, laterally stable steel springs in series with an elastomer-in-shear insert, assembled into a stamped or welded hanger bracket. To assure stability, the spring element has a minimum lateral spring stiffness of 1.0 times the rated vertical stiffness. Hangers will allow a support rod misalignment through a 30° arc without short circuiting. Isolation brackets will carry a 500% overload without failure. Hangers are available in deflections from 1.20" to 2.40" (30 to 61 mm), and in capacities from 35 to 3500 lbs. (16 to 1588 kg). Model SRH hangers are superior to hangers which incorporate only springs, which can transmit noise through the all metal construction, and hangers which incorporate only pads, which can transmit low frequency vibration. Kinetics Model SRH hangers are recommended for the isolation of vibration produced by suspended mechanical equipment, low-speed suspended fans, transformers, ductwork, piping, etc.

How the self-centering no-short cap works:



Indexed steps in spring cap correspond to standard washer diameters for the appropriate rod diameter. The washer and rod stay centered in the cap.



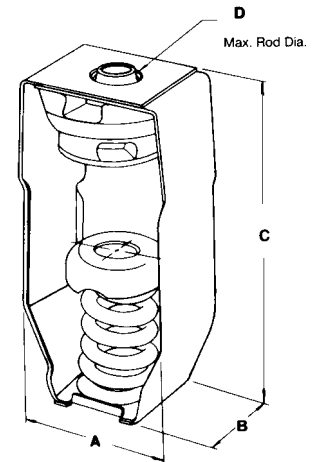
Application

Kinetics Model SRH hangers are used to isolate suspended sources of both noise and vibration. Suspended mechanical equipment such as in-line fans, cabinet fans, and piping and ductwork in close proximity to mechanical equipment are typical uses of Model SRH hangers. High sound transmission loss ceiling systems can be isolated by the use of Model SRH hangers in the ceiling suspension system.

Standard Model SRH hangers are shipped fully assembled and ready for installation in threaded metal rod suspension systems.

Model SRH hangers are available in a wide range of load and static deflection selections and can be provided with labor-saving accessories for adaption to wire or strap suspension systems, and may be preloaded or provided with positioning plates for ease in erecting piping at a fixed elevation.

Isolator Type	Spring Color	Rated Capacity Lbs (kg)	Rated Deflection In. (mm)	Spring O.D. In. (mm)	A	B	C	D
SRH-1-35	Blue	35 (16)	1.62 (41)	1.75 (45)	3.69 (94)	2.25 (57)	7.38 (187)	.63 (16)
SRH-1-70	Green	70 (32)	1.56 (40)	1.75 (45)	3.69 (94)	2.25 (57)	7.38 (187)	.63 (16)
SRH-1-125	Gray	125 (57)	1.57 (40)	1.75 (45)	3.69 (94)	2.25 (57)	7.38 (187)	.63 (16)
SRH-1-245	Brown	245 (111)	1.50 (38)	1.75 (45)	3.69 (94)	2.25 (57)	7.38 (187)	.63 (16)
SRH-1-370	Orange	370 (168)	1.30 (33)	1.75 (45)	3.69 (94)	2.25 (57)	7.38 (187)	.63 (16)
SRH-1-500	Beige	500 (227)	1.40 (36)	1.75 (45)	3.69 (94)	2.25 (57)	7.38 (187)	.63 (16)
SRH-1-600	Chrome	600 (273)	1.35 (34)	1.75 (45)	3.69 (94)	2.25 (57)	7.38 (187)	.63 (16)
SRH-1-700	Beige/Wh	700 (318)	1.31 (33)	1.75 (45)	3.69 (94)	2.25 (57)	7.38 (187)	.63 (16)
SRH-1-805	Chr/Wh	805 (366)	1.32 (34)	1.75 (45)	3.69 (94)	2.25 (57)	7.38 (187)	.63 (16)
SRH-1-250	Blue	250 (114)	2.14 (54)	3.00 (76)	5.58 (142)	3.63 (92)	8.59 (218)	.88 (22)
SRH-1-450	Green	450 (205)	1.94 (49)	3.00 (76)	5.58 (142)	3.63 (92)	8.59 (218)	.88 (22)
SRH-1-625	Black	625 (284)	1.79 (45)	3.00 (76)	5.58 (142)	3.63 (92)	8.59 (218)	.88 (22)
SRH-1-800	Gray	800 (364)	1.62 (41)	3.00 (76)	5.58 (142)	3.63 (92)	8.59 (218)	.88 (22)
SRH-1-1000	Red	1000 (455)	1.50 (38)	3.00 (76)	5.58 (142)	3.63 (92)	8.59 (218)	.88 (22)
SRH-1-1250	Brown	1250 (568)	1.28 (33)	3.00 (76)	5.58 (142)	3.63 (92)	8.59 (218)	.88 (22)
SRH-1-1700	Orange	1700 (773)	1.34 (34)	3.00 (76)	5.58 (142)	3.63 (92)	8.59 (218)	.88 (22)
SRH-1-2200	Org/Gray	2200 (998)	1.36 (32)	3.00 (76)	5.00 (127)	4.75 (121)	9.50 (241)	.88 (22)
SRH-1-2465	Blue	2465 (1118)	1.42 (33)	3.00 (76)	5.00 (127)	4.75 (121)	9.50 (241)	.88 (22)
SRH-1-2865	Blu/Gray	2865 (1300)	1.20 (34)	3.00 (76)	5.00 (127)	4.75 (121)	9.50 (241)	.88 (22)
SRH-1-3500	Blu/Brn	3500 (1588)	1.18 (30)	3.00 (76)	5.00 (127)	4.75 (121)	9.50 (241)	.88 (22)
SRH-2-35	Blue	35 (16)	2.10 (53)	1.75 (45)	3.69 (94)	2.25 (57)	7.38 (187)	.50 (13)
SRH-2-70	Green	70 (32)	2.20 (56)	1.75 (45)	3.69 (94)	2.25 (57)	7.38 (187)	.50 (13)
SRH-2-120	Gray	120 (55)	2.30 (58)	1.75 (45)	3.69 (94)	2.25 (57)	7.38 (187)	.50 (13)
SRH-2-220	Brown	220 (100)	2.40 (61)	1.75 (45)	3.69 (94)	2.25 (57)	7.38 (187)	.50 (13)
SRH-2-260	Blue	260 (118)	2.14 (54)	3.00 (76)	5.58 (142)	3.63 (92)	8.59 (218)	.88 (22)
SRH-2-465	Green	465 (211)	2.00 (51)	3.00 (76)	5.58 (142)	3.63 (92)	8.59 (218)	.88 (22)
SRH-2-720	Black	720 (328)	2.00 (51)	3.00 (76)	5.58 (142)	3.63 (92)	8.59 (218)	.88 (22)
SRH-2-850	White	850 (386)	2.03 (52)	3.00 (76)	5.58 (142)	3.63 (92)	8.59 (218)	.88 (22)
SRH-2-1025	Beige	1025 (466)	2.00 (51)	3.00 (76)	5.58 (142)	3.63 (92)	8.59 (218)	.88 (22)
SRH-2-1200	Chrome	1200 (456)	2.03 (52)	3.00 (76)	5.58 (142)	3.63 (92)	8.59 (218)	.88 (22)
SRH-2-2000	Orange	2000 (907)	2.11 (54)	3.00 (127)	6.00 (152)	6.00 (152)	12.00 (305)	1.00 (25)
SRH-2-2500	Blue	2500 (1134)	2.12 (54)	3.00 (127)	6.00 (152)	6.00 (152)	12.00 (305)	1.00 (25)
SRH-2-2750	Blu/Blu	2750 (1245)	2.16 (55)	5.00 (127)	6.00 (152)	6.00 (152)	12.00 (305)	1.00 (26)
SRH-2-3025	Blu/Grn	3025 (1375)	2.20 (56)	5.00 (127)	6.00 (152)	6.00 (152)	12.00 (305)	1.00 (26)
SRH-2-3250	Blu/Blk	3250 (1475)	2.20 (56)	5.00 (127)	6.00 (152)	6.00 (152)	12.00 (305)	1.00 (26)



Specifications

Vibration isolators for suspended equipment with minimum static deflection requirement exceeding 0.4" (10 mm), and where both high and low frequency vibrations are to be isolated, shall be hangers consisting of a laterally stable spring in series with an elastomer-in-shear insert complete with load transfer plates and assembled in a stamped or welded steel bracket.

The bracket shall be finished with an epoxy-based powder coating. The manufacturer shall provide independent laboratory testing showing that the bracket with this finish has endured a minimum of 1,000 hours of exposure to salt spray fog testing per ASTM B117 without signs of corrosion.

The elastomer insert shall be molded from oil-resistant compounds and shall be color coded to indicate load capacity and selected to operate within its published load range.

The spring element shall have a minimum lateral stiffness of 1.0 times the rated vertical stiffness.

Springs shall be color coded or otherwise identified to indicate load capacity.

The hanger bracket shall be designed to carry a 500% overload without failure and to allow a support rod misalignment through a 30° arc without metal-to-metal contact or other short circuit.

The hanger bracket shall incorporate spring caps with indexed steps which correspond to the washer diameter of the appropriately sized hanger rod to keep the rod centered in the spring cap and reduce rod misalignment.

Isolation hangers shall be selected by the manufacturer for each specific application to comply with deflection requirements as shown on the Vibration Isolation Schedule or as indicated on the project documents.

The combination isolation hanger assembly with neoprene insert shall be Model SRH, as manufactured by Kinetics Noise Control, Inc.



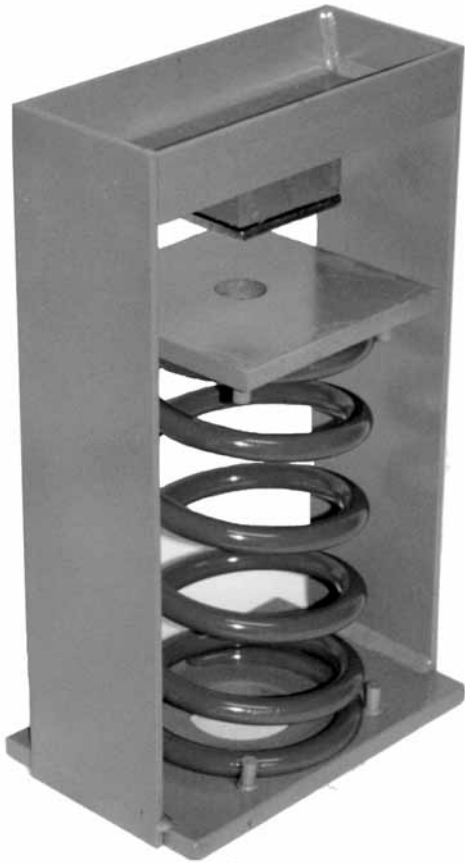
United States	Canada
6300 Ireland Place	1720 Meyerside Drive
P.O. Box 655	Mississauga, Ontario
Dublin, Ohio 43017	L5T 1A3
Phone: 614-889-0480	Phone: 905-670-4922
Fax: 614-889-0540	Fax: 905-670-1698

www.kineticsnoise.com
sales@kineticsnoise.com

Kinetics Noise Control, Inc. is continually upgrading the quality of our products. We reserve the right to make changes to this and all products without notice.

KINETICS™

4" Deflection Isolation Hangers Model SRH



Description

Kinetics Model SRH Vibration Isolation hangers consist of free-standing, large diameter, laterally stable steel springs in series with an elastomer-in-shear insert, assembled into a welded hanger bracket. Hangers incorporate a high deflection, color-coded spring element with load transfer plate and a 0.4" (10 mm) deflection elastomeric isolator complete with load transfer plate. To assure stability, the spring element has a minimum lateral spring stiffness of 1.0 times the rated vertical stiffness. Springs are epoxy powder coated, with a 1000 hour salt spray rating per ASTM B-117. Hangers will allow a support rod misalignment through a 30° arc without short circuiting. Isolation brackets will carry a 500% overload without failure. Hangers are available in deflections from 4.09" to 4.40" (104 mm to 112 mm), and in capacities from 100 to 3850 lbs. (46 to 1747 kg). Model SRH hangers are superior to hangers which incorporate a spring only, which will transmit noise through the all-metal construction, and hangers which incorporate noise stop pads only, which will transmit low frequency vibration that a spring can isolate. Kinetics Model SRH combination hangers are recommended for the isolation of vibration produced by suspended mechanical equipment, low speed suspended fans, transformers, ductwork, piping, etc.

Application

Kinetics Model SRH hangers are used to isolate suspended sources of both audible and inaudible noise and vibration. Suspended mechanical equipment such as in-line fans, cabinet fans, and piping and ductwork in close proximity to mechanical equipment are typical uses of Model SRH hangers.

Kinetics' minimum recommendation for the placement of spring hangers is that they be installed on all piping in the equipment room and on for the first fifty feet for piping that extends outside of the equipment room. For typical installations, the three spring hangers closest to the equipment should have equal deflection to the equipment isolators. The remaining spring hangers should have a minimum deflection of one inch. In noise sensitive areas, the pipe hangers selected should have the same deflection as that specified for the equipment isolation and all piping in the building should be isolated.

Standard Model SRH hangers are shipped fully assembled and ready for installation in threaded metal rod suspension systems.

Model SRH hangers are available in a wide range of load and static deflection selections and can be provided with labor-saving accessories for adaption to wire or strap suspension systems, and may be preloaded for ease in erecting piping at a fixed elevation.

Hanger Type	Spring Color	Rated Capacity		Rated Deflection		A		B		C		D		E		F		G	
		lb	kg	in	mm	in	mm	in	mm	in	mm	in	mm	in	mm	in	mm	in	mm
SRH-4-100	Gray	100	46	4.10	104	9.38	238	6.00	152	16.00	406	.88	22	10.00	254	2.89	73	4.00	102
SRH-4-250	Blue	250	114	4.20	107	9.38	238	6.00	152	16.00	406	.88	22	10.00	254	2.89	73	4.00	102
SRH-4-500	Green	500	227	4.15	105	9.38	238	6.00	152	16.00	406	.88	22	10.00	254	2.89	73	4.00	102
SRH-4-750	Black	750	341	4.25	108	9.38	238	6.00	152	16.00	406	.88	22	10.00	254	2.89	73	4.00	102
SRH-4-1000	Red	1000	455	4.28	109	9.38	238	6.00	152	16.00	406	.88	22	10.00	254	2.89	73	4.00	102
SRH-4-1250	Brown	1250	568	4.35	110	9.38	238	6.00	152	16.00	406	.88	22	10.00	254	2.89	73	4.00	102
SRH-4-1600	Orange	1600	727	4.40	112	9.38	238	6.00	152	16.00	406	.88	22	10.00	254	2.89	73	4.00	102
SRH-4-2250	Beige	2250	1023	4.09	104	13.50	343	8.00	203	18.50	470	.87	22	11.50	292	3.17	81	6.00	152
SRH-4-2500	Beige/Blu	2500	1136	4.10	104	13.50	343	8.00	203	18.50	470	.87	22	11.50	292	3.17	81	6.00	152
SRH-4-2750	Beige/Grn	2750	1250	4.12	105	13.50	343	8.00	203	18.50	470	.87	22	11.50	292	3.17	81	6.00	152
SRH-4-3000	Beige/Blk	3000	1364	4.13	105	13.50	343	8.00	203	18.50	470	1.00	25	11.50	292	3.17	81	6.00	152
SRH-4-3250	Beige/Red	3250	1475	4.14	105	13.50	343	8.00	203	18.50	470	1.00	25	11.50	292	3.17	81	6.00	152
SRH-4-3500	Beige/Brn	3500	1588	4.15	105	13.50	343	8.00	203	18.50	470	1.00	25	11.50	292	3.17	81	6.00	152
SRH-4-3850	Beige/Org	3850	1747	4.16	106	13.50	343	8.00	203	18.50	470	1.00	25	11.50	292	3.17	81	6.00	152

Specifications

Vibration isolators for suspended equipment with minimum static deflection requirement exceeding 0.4" (10 mm), and where both high and low frequency vibrations are to be isolated, shall be hangers consisting of a laterally stabile steel spring in series with an elastomer-in-shear insert complete with load transfer plates and assembled in a welded steel bracket.

The bracket shall be finished with an epoxy-based powder coating. The manufacturer shall provide independent laboratory testing showing that the bracket with this finish has endured a minimum of 1,000 hours of exposure to salt spray fog testing per ASTM B117 without signs of corrosion.

The elastomer insert shall be molded from oil-resistant compounds and shall be color coded to indicate load capacity and selected to operate within its published load range.

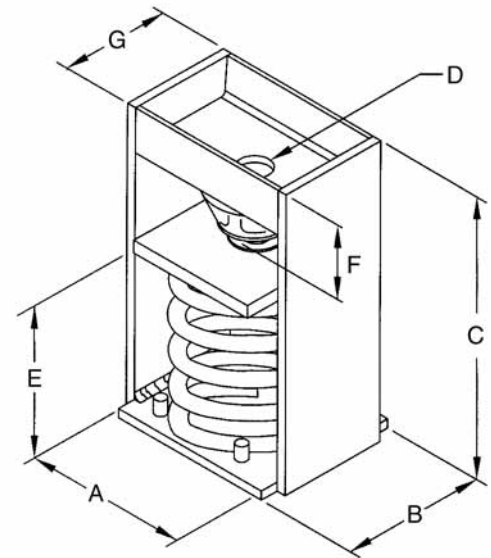
The spring element shall have a minimum lateral stiffness of 1.0 times the rated vertical stiffness.

Springs shall be color coded or otherwise identified to indicate load capacity.

The hanger bracket shall be designed to carry a 500% overload without failure and to allow a support rod misalignment through a 30° arc without metal-to-metal contact or other short circuit.

Isolation hangers shall be selected by the manufacturer for each specific application to comply with deflection requirements as shown on the Vibration Isolation Schedule or as indicated on the project documents.

The combination isolation hanger assembly with neoprene insert shall be Model SRH, as manufactured by Kinetics Noise Control, Inc.



United States 6300 Ireland Place P.O. Box 655 Dublin, Ohio 43017 Phone: 614-889-0480 Fax: 614-889-0540	Canada 1720 Meyerside Drive Mississauga, Ontario L5T 1A3 Phone: 905-670-4922 Fax: 905-670-1698
--	--

www.kineticsnoise.com
sales@kineticsnoise.com

Kinetics Noise Control, Inc. is continually upgrading the quality of our products. We reserve the right to make changes to this and all products without notice.