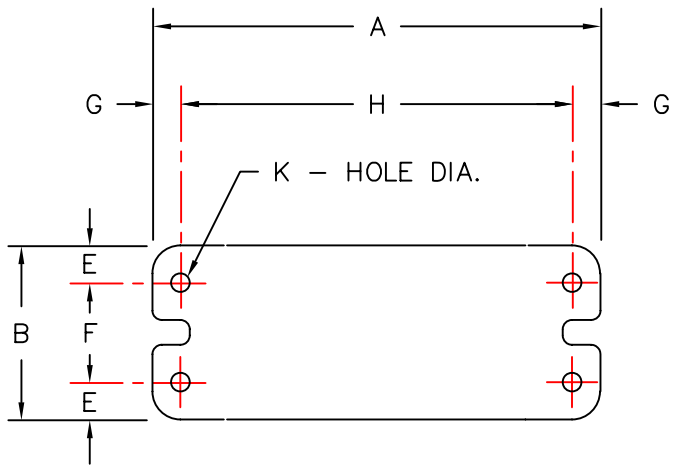


SPRING TYPE	SPRING COLOR	RATED LOAD	RATED DEFL.	A	B	C	D	E	F	G	H	K
SMP-250C	BLUE	250/115	1.79	9.00 (229)	3.50 (89)	5.00 (127)	.62 (16)	.75 (19)	2.00 (50)	.75 (19)	7.50 (190)	.44 (12)
SMP-450C	GREEN	450/205	1.54	9.00 (229)	3.50 (89)	5.00 (127)	.62 (16)	.75 (19)	2.00 (50)	.75 (19)	7.50 (190)	.44 (12)
SMP-625C	BLACK	625/285	1.44	9.00 (229)	3.50 (89)	5.00 (127)	.62 (16)	.75 (19)	2.00 (50)	.75 (19)	7.50 (190)	.44 (12)
SMP-800C	GRAY	800/365	1.31	9.00 (229)	3.50 (89)	5.00 (127)	.62 (16)	.75 (19)	2.00 (50)	.75 (19)	7.50 (190)	.44 (12)
SMP-1000C	RED	1000/455	1.15	9.00 (229)	3.50 (89)	5.00 (127)	.62 (16)	.75 (19)	2.00 (50)	.75 (19)	7.50 (190)	.44 (12)
SMP-1250C	BROWN	1250/565	1.09	9.00 (229)	3.50 (89)	5.00 (127)	.62 (16)	.75 (19)	2.00 (50)	.75 (19)	7.50 (190)	.44 (12)
SMP-1700C	ORANGE	1700/770	1.00	9.00 (229)	3.50 (89)	5.00 (127)	.62 (16)	.75 (19)	2.00 (50)	.75 (19)	7.50 (190)	.44 (12)
SMP-2200C	ORANGE/ GRAY	2200/998	1.00	9.00 (229)	3.50 (89)	5.00 (127)	.62 (16)	.75 (19)	2.00 (50)	.75 (19)	7.50 (190)	.44 (12)
SMP-2465C	BLUE	2465/1118	1.00	9.00 (229)	3.50 (89)	5.00 (127)	.62 (16)	.75 (19)	2.00 (50)	.75 (19)	7.50 (190)	.44 (12)
* SMP-2865C	BLUE/ GRAY	2865/1300	1.00	9.00 (229)	3.50 (89)	5.00 (127)	.62 (16)	.75 (19)	2.00 (50)	.75 (19)	7.50 (190)	.44 (12)
* SMP-3500C	BLUE/ BROWN	3500/1588	1.00	9.00 (229)	3.50 (89)	5.00 (127)	.62 (16)	.75 (19)	2.00 (50)	.75 (19)	7.50 (190)	.44 (12)

(LBS./Kg) (IN/mm)



BOLTING TEMPLATE

SMP ISOLATORS HAVE A TYPICAL K_x/K_y OF 1.0
 SMP ISOLATORS HAVE A TYPICAL OVERLOAD CAPACITY OF 50%
 ITEMS MARKED (*) HAVE A TYPICAL OVERLOAD CAPACITY OF 30%.
 SMP SPRING ELEMENTS ARE PAINTED
 SMP HOUSINGS ARE CAST IRON
 SMP SPRING CAPS AND HARDWARE ARE BRIGHT ZINC PLATED
 SMP ISOLATORS HAVE ADJUSTABLE SNUBBING

NOTE: ALL THREADED MEMBERS ARE AMERICAN STANDARD.



TITLE
SMP-250C/3500C

LAST DATE
 REVISED
5/20/97

DRAWN BY
DW

DRAWING NO.
S-01.25-1P