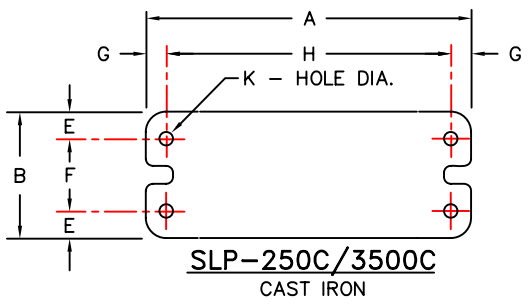
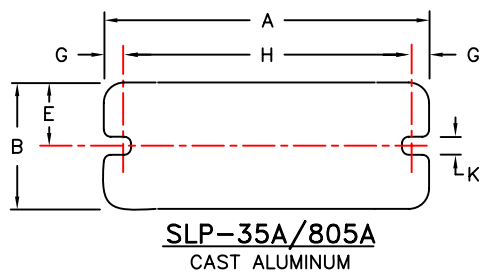


SPRING TYPE	SPRING COLOR	RATED LOAD	RATED DEFL.	A	B	C	D	E	F	G	H	K
SLP-35A	BLUE	35/16	1.57/39	6.12/155	2.12/54	3.50/89	.37/10	1.06/27	-	.25/6	5.63/143	.31/8
SLP-70A	GREEN	70/32	1.41/35	6.12/155	2.12/54	3.50/89	.37/10	1.06/27	-	.25/6	5.63/143	.31/8
SLP-120A	GRAY	120/55	1.23/30	6.12/155	2.12/54	3.50/89	.37/10	1.06/27	-	.25/6	5.63/143	.31/8
SLP-220A	BROWN	220/100	1.12/27	6.12/155	2.12/54	3.50/89	.37/10	1.06/27	-	.25/6	5.63/143	.31/8
SLP-370A	ORANGE	370/165	1.01/25	6.12/155	2.12/54	3.50/89	.37/10	1.06/27	-	.25/6	5.63/143	.31/8
* SLP-500A	BEIGE	500/225	1.00/25	6.12/155	2.12/54	3.50/89	.37/10	1.06/27	-	.25/6	5.63/143	.31/8
* SLP-600A	CHROME	600/275	1.00/25	6.12/155	2.12/54	3.50/89	.37/10	1.06/27	-	.25/6	5.63/143	.31/8
* SLP-700A	BEIGE/ WHITE	700/315	1.00/25	6.12/155	2.12/54	3.50/89	.37/10	1.06/27	-	.25/6	5.63/143	.31/8
* SLP-805A	CHROME/ WHITE	805/365	1.00/25	6.12/155	2.12/54	3.50/89	.37/10	1.06/27	-	.25/6	5.63/143	.31/8
SLP-250C	BLUE	250/115	1.84/46	9.00/229	3.50/89	5.00/127	.62/16	.75/19	2.00/51	.75/19	7.50/191	.44/12
SLP-450C	GREEN	450/205	1.59/39	9.00/229	3.50/89	5.00/127	.62/16	.75/19	2.00/51	.75/19	7.50/191	.44/12
SLP-625C	BLACK	625/285	1.49/37	9.00/229	3.50/89	5.00/127	.62/16	.75/19	2.00/51	.75/19	7.50/191	.44/12
SLP-800C	GRAY	800/365	1.36/33	9.00/229	3.50/89	5.00/127	.62/16	.75/19	2.00/51	.75/19	7.50/191	.44/12
SLP-1000C	RED	1000/455	1.21/29	9.00/229	3.50/89	5.00/127	.62/16	.75/19	2.00/51	.75/19	7.50/191	.44/12
SLP-1250C	BROWN	1250/565	1.14/28	9.00/229	3.50/89	5.00/127	.62/16	.75/19	2.00/51	.75/19	7.50/191	.44/12
SLP-1700C	ORANGE	1700/770	1.00/25	9.00/229	3.50/89	5.00/127	.62/16	.75/19	2.00/51	.75/19	7.50/191	.44/12
SLP-2200C	ORANGE/ GRAY	2200/998	1.00/25	9.00/229	3.50/89	5.00/127	.62/16	.75/19	2.00/51	.75/19	7.50/191	.44/12
SLP-2465C	BLUE	2465/1118	1.00/25	9.00/229	3.50/89	5.00/127	.62/16	.75/19	2.00/51	.75/19	7.50/191	.44/12
* SLP-2865C	BLUE/ GRAY	2865/1300	1.00/25	9.00/229	3.50/89	5.00/127	.62/16	.75/19	2.00/51	.75/19	7.50/191	.44/12
* SLP-3500C	BLUE/ BROWN	3500/1588	1.00/25	9.00/229	3.50/89	5.00/127	.62/16	.75/19	2.00/51	.75/19	7.50/191	.44/12



(LBS/KG) (IN/MM)

SLP ISOLATORS HAVE A TYPICAL K_x/K_y OF 1.0
 SLP ISOLATORS HAVE A TYPICAL OVERLOAD CAPACITY OF 50%
 ITEMS MARKED (*) HAVE A TYPICAL OVERLOAD OF 30%
 SLP SPRING ELEMENTS ARE PAINTED
 SLP HOUSINGS ARE CAST IRON OR CAST ALUM. (SEE ABOVE)
 SLP SPRING CAPS AND HARDWARE ARE BRIGHT ZINC PLATED
 SLP ISOLATORS HAVE HORIZONTAL SNUBBING

NOTE: ALL THREADED MEMBERS ARE AMERICAN STANDARD.

	TITLE	LAST DATE REVISED	DRAWN BY	DRAWING NO.
	SLP-35A/3500C	5/16/97	DW	S-01.24-1P