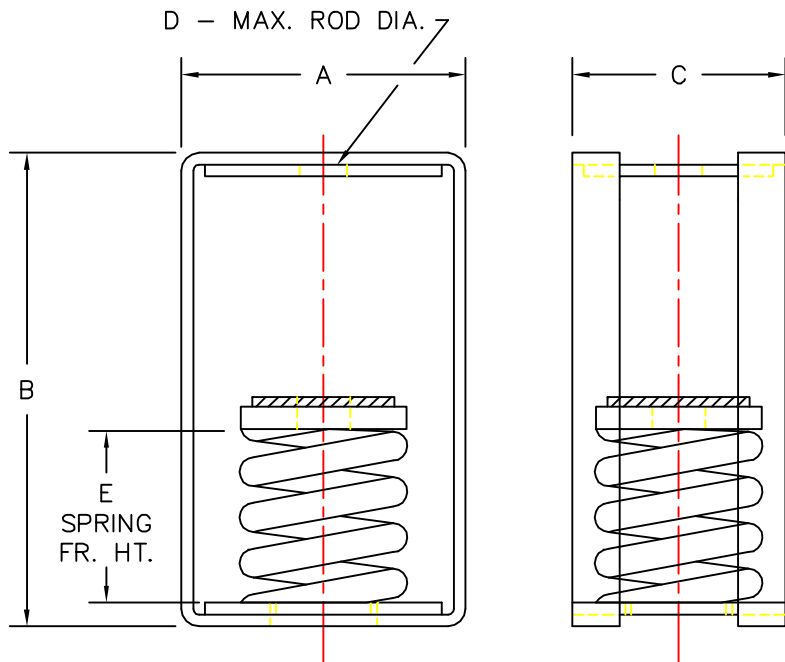


MODEL	SPRING COLOR	RATED LOAD LBS/KG	RATED DEFLECTION IN/MM	DIMENSIONS IN IN/MM				
				A	B	C	D	E
SH-2-2750	BLU/BLU	2750/1245	2.00/51	6.00/152	12/305	6.00/152	1.00/25	7.00/178
SH-2-3025	BLU/GRN	3025/1375	2.00/51	6.00/152	12/305	6.00/152	1.00/25	7.00/178
SH-2-3250	BLU/BLK	3250/1475	2.00/51	6.00/152	12/305	6.00/152	1.00/25	7.00/178



- SH-2 ISOLATION HANGERS HAVE A MINIMUM  $K_x/K_y$  OF 1.3
- SH-2 ISOLATION HANGERS HAVE A TYPICAL OVERLOAD CAPACITY OF 50%
- SH-2 SPRING ELEMENTS ARE SAFE FOR SOLID LOADING
- SH-2 HANGER BRACKETS WILL CARRY (5) TIMES OVERLOAD WITHOUT FAILURE
- SH-2 HANGER BRACKETS WILL ALLOW 30° ROD MISALIGNMENT WITHOUT SHORT CIRCUITING
- SH-2 SPRING ELEMENTS AND BRACKETS ARE PAINTED



TITLE  
MODEL SH-2 HANGER

LAST DATE  
REVISED  
9/16/96

DRAWN BY  
DW

DRAWING NO.  
S-03.36-2D