

KINETICS™

Structural Frame Bases Model SFB



Description

Kinetics Model SFB Welded Structural Frame Bases are individually engineered to support and add rigidity to a specific piece of mechanical equipment and to allow the use of selected vibration isolators. The bases provide a rigid frame to reduce motion on start-up and maintain belt or drive alignment. The bases are fabricated with channels, angles, or WF beams, and are complete with outboard height-saving isolator brackets and prelocated equipment anchor bolts. Main steel members have section depths of 3" to 12" (76 mm to 305 mm), designed to be a minimum of 10% of the longest span between isolators.

Application

Kinetics Model SFB Structural Frame Bases are specifically designed and engineered to support mechanical equipment requiring a supplemental mounting frame.

Structural frame bases are used to support mechanical equipment and provide rigid platforms for attachment of vibration isolators, without allowing excessive differential movement between driving and driven members. The bases provide a means by which the equipment can be stabilized and motion reduced by lowering the equipment center of gravity.

Typical uses of Kinetics Model SFB structural frame bases, with Kinetics vibration isolators, include support and isolation of reciprocating chillers, close coupled pumps, vent sets, packaged air handling units, centrifugal fans, evaporative condensers, and similar types of equipment.

Specifications

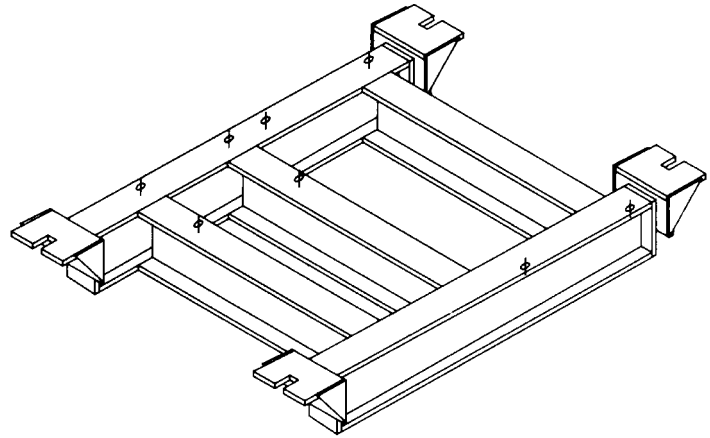
Bases shall be fabricated from structural beam sections with welded isolator brackets and prelocated anchor bolt holes, and shall be designed and supplied by the isolation materials manufacturer.

Section depth of each member shall be greater than 10% of the longest span between supporting isolators, or as shown on the drawings or indicated in the project documents.

Isolator support brackets shall be welded to the structural beams as required to obtain the lowest mounting height for the supported equipment.

Lateral cross members shall be added to form a structurally integral, welded frame to provide a rigid, distortion-free frame to support and anchor separate equipment components or driving and driven members.

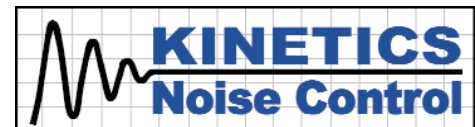
Structural frame bases shall be Model SFB, as manufactured by Kinetics Noise Control, Inc.



Features

- Welded structural frame base
- Standard section depths 3" through 12" (75 mm through 305 mm)
- Frame members include WF beams, Channels, Angles, and I-beams
- Frame sizes and shapes as required
- Height-saving brackets
- Prelocated anchor bolt holes

Standard Structural Members	Width of Flange	Weight per Foot (m)	Length and Width
2" x 3" (51 mm x 76 mm) Angle	2" (51 mm)	4.1#/ft. (5.8 kg/m)	As Required
3" x 4" (76 mm x 102 mm) Angle	3" (76 mm)	5.8#/ft. (8.2 kg/m)	
3 1/2" x 6" (89 mm x 152 mm) Angle	3 1/2" (89 mm)	7.9#/ft. (11.2 kg/m)	
4" (102 mm) Channel	1 5/8" (41 mm)	5.4#/ft. (7.6 kg/m)	As Required
6" (152 mm) Channel	1 15/16" (49 mm)	8.2#/ft. (11.6 kg/m)	
8" (203 mm) Channel	1 7/8" (48 mm)	8.5#/ft. (12.0 kg/m)	
6" (152 mm) WF Beam	4" (102 mm)	8.5#/ft. (12.0 kg/m)	As Required
8" (203 mm) WF Beam	4" (102 mm)	10.0#/ft. (14.1 kg/m)	
10" (254 mm) WF Beam	4" (102 mm)	11.5#/ft. (16.3 kg/m)	
12" (305 mm) WF Beam	4" (102 mm)	14.0#/ft. (19.8 kg/m)	



United States 6300 Irelan Place P.O. Box 655 Dublin, Ohio 43017 Phone: 614-889-0480 Fax: 614-889-0540	Canada 1720 Meyerside Drive Mississauga, Ontario L5T 1A3 Phone: 905-670-4922 Fax: 905-670-1698
--	---

www.kineticsnoise.com
sales@kineticsnoise.com

Kinetics Noise Control, Inc. is continually upgrading the quality of our products. We reserve the right to make changes to this and all products without notice.