



## Benefits

- **Excellent acoustic properties together with very high load bearing characteristics.**
- **Extensive independent testing conducted by the "Institute of Structural Dynamics" at the Technical University of Dresden**
- **Maximum load bearing capacity - 1.5N/mm<sup>2</sup> (150000kg/m<sup>2</sup>).**
- **Completely recyclable and can therefore compliment companies "Environmental Policies" .**
- **No expensive mechanical parts.**
- **Supplied in sheets or can be individually cut into pads/strips to suit exact installation.**
- **Quick and easy to install.**

## Description

**Regupol® RAV600** is a very high load bearing structural isolation material. It is a very cost effective solution using polyurethane bound rubber granulate material developed and formulated to isolate structural vibrations at source and has been developed for the structural and civil engineering industries.

**Regupol® RAV600** will retain its performance properties throughout a long and maintenance free lifespan assuming the material does not exceed a load bearing capacity of 1.5N/mm<sup>2</sup>. **Regupol® RAV600** is also 100% recyclable.

## Physical Information

Roll Dimensions	8m x 1.25m
Standard Thickness	10mm (other thicknesses are available upon request)

Individual Pad/Strips can be supplied upon request.

## Technical Information

Max. Load Bearing Capacity	1.5N/mm <sup>2</sup>
Roll/Sheet Sizes	8m x 1.25m
Temperature Resistance	-40° up to +110°C (Short Term)
Static Modulus of Elasticity	9.80 - 14.0N/mm <sup>2</sup>
Dynamic Modulus of Elasticity*	4.0 - 18.5N/mm <sup>2</sup>
Compression Set to DIN 53572**	Approx. 5.00%
Tensile Strength to DIN 53571	Min. 2.20N/mm <sup>2</sup>
Elongation at Break to DIN 53571	Min. 120%
Tear Resistance to DIN 53515	Min. 16.0N/mm

\*Figures dependent upon load and natural frequency and material thickness

\*\*Measured 30 minutes after decompression with 50% deformation @ 23°C after 72 hours

See overleaf for performance graphs.

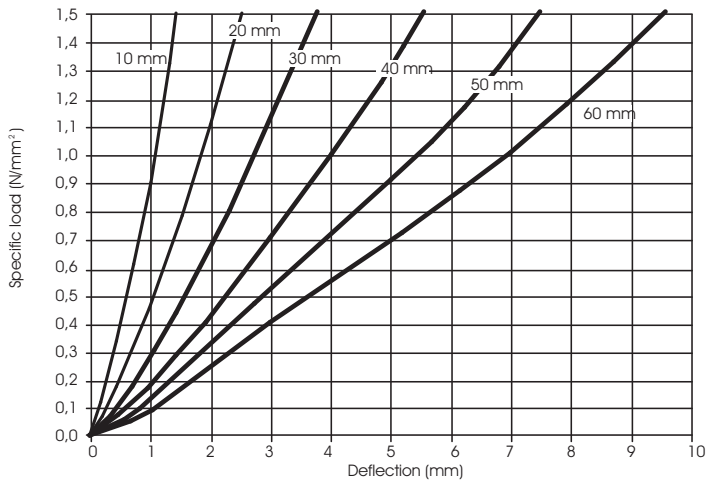
## Applications

**Regupol® RAV600** has a multitude of applications and can be used in both non-critical and critical areas whether for dampening or isolation of noise and vibrations respectively and can be used for:

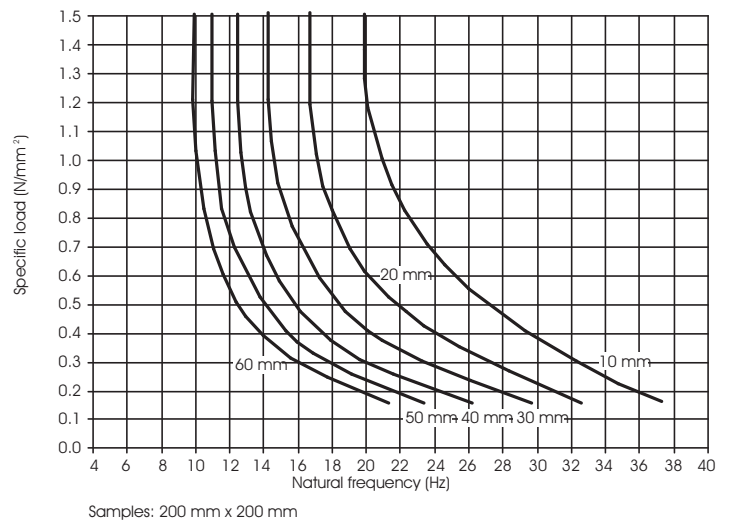
- Heavy Duty Machinery
- Machinery with vertical shock loads, e.g. Guillotines, Power Presses
- Structural Isolation
- Foundation Isolation

For information relating to specific applications and the correct adhesive, please contact CMS Vibration Solutions Technical Department.

## Load Deflection

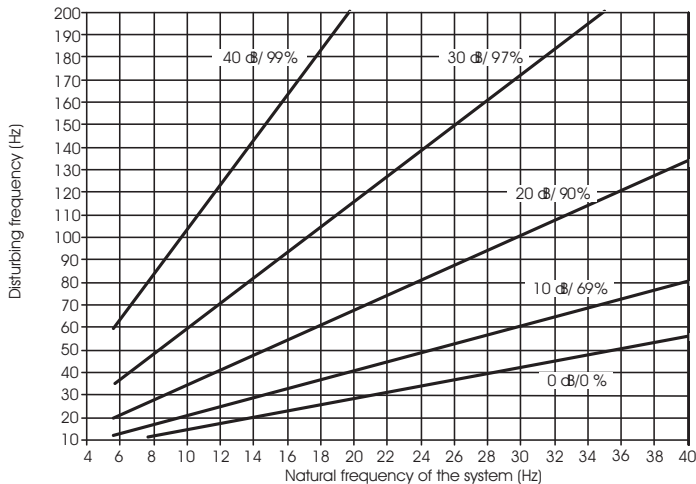


## Natural Frequency



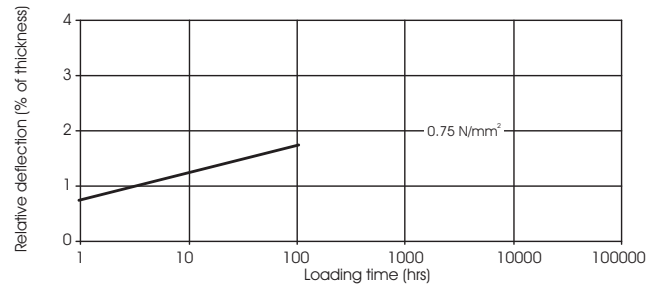
Samples: 200 mm x 200 mm

## Vibration Insulation



Parameter: Power transmission loss (dB), Isolation factor in %

## Long-term Creep



Samples: 200 mm x 200 mm x 30 mm

Full long term creep test report available on request

## Installation Service

In addition to supply of this product CMS Vibration Solutions offers a competitively priced installation service anywhere in the UK. Use of our service ensures that installation is performed to the highest standards by tradesmen fully experienced in the specialist skills of fitting vibration isolation materials correctly. For further details contact our technical team on 01925 582899.



Head Office: 4b, Eagle Park, Eagle Park Drive, Warrington WA2 8JA

Tel: 01925 582899 Fax: 01925 582898

Southern Office: Dugard House, Peartree Road, Colchester CO3 0UL

Tel: 01206 216690 Fax: 01206 577954

IMPORTANT: Directions for use are given for guidance only and are not intended to form part of any contract. They should be varied or adapted to suit your particular materials or conditions of use. Goods supplied by the company are made to approved standards from the highest quality raw materials but no warranty or guarantee is given as to their suitability for any particular purpose or application, and no liability is accepted for any loss or damage arising directly or indirectly from the use of the Company's products irrespective of any information given to us as to intended use of such products. It is therefore recommended that prospective users should test a sample of this product under their own conditions to satisfy themselves that the product is suitable for the purpose intended.

CADS 15007 - 4 0506 © CMS Vibration Solutions Ltd 2006

Regupol® and Regufoam® are registered trade marks of BSW GmbH