

# KINETICS™

## Elastometric Isolators Model RD

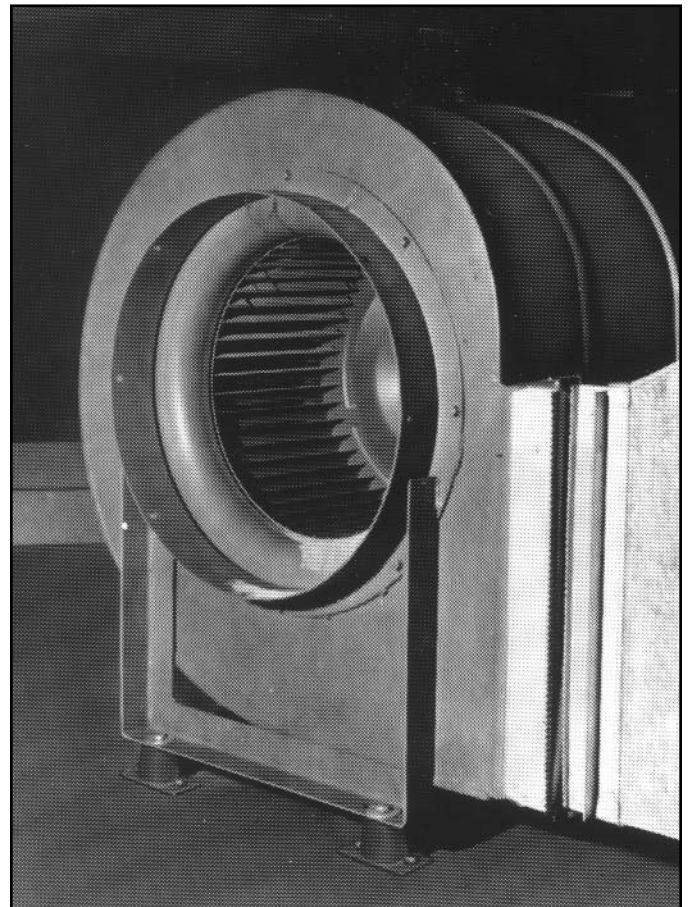
### Description

Kinetics Model RD Vibration Isolators are one-piece molded neoprene mounts with encapsulated metal inserts, are color coded to identify capacity, and have non-skid ribs on the bottom load surfaces. Each isolator incorporates two bolt-down holes on the bottom load surface and a tapped steel load top plate for attachment to the supported equipment. The neoprene is highly oil resistant and has been designed to operate within the strain limits of the isolator to provide maximum isolation and longest life expectancy possible using neoprene compounds. Model RD is designed for up to 0.5" (13 mm) deflection, available in four sizes and eleven capacities from 55 lbs. to 4,000 lbs. (25 kg to 1814 kg). Kinetics Model RD is recommended for the isolation of vibration produced by small pumps, vent sets, low pressure packaged air-handling units, etc., and is usually selected when first cost must be minimized.

### Application

Kinetics Model RD neoprene isolation mounts can be used to isolate noise and high frequency vibration generated by mechanical equipment located on a grade-supported structural slab or pier.

Typical applications of Model RD neoprene isolators are limited to isolation of mechanical equipment having the lowest operating speeds of 1750 RPM when located on a grade-supported slab or pier, and include close-coupled pumps with motors of 5 H.P. or less, small vent sets, low pressure packaged air-handling units, and similar equipment types



Model RD neoprene isolation mounts can be used for isolation of mechanical equipment specified to be supported by neoprene rubber or elastomer isolators and with tabulated minimum static deflection up to 0.50 inches (13 mm).

### Features

- Molded neoprene isolator
- Cast-in tapped steel load plate
- Cast-in drilled steel anchor/baseplate
- Load capacities 55 pounds to 4000 pounds (25 kg to 1814 kg)

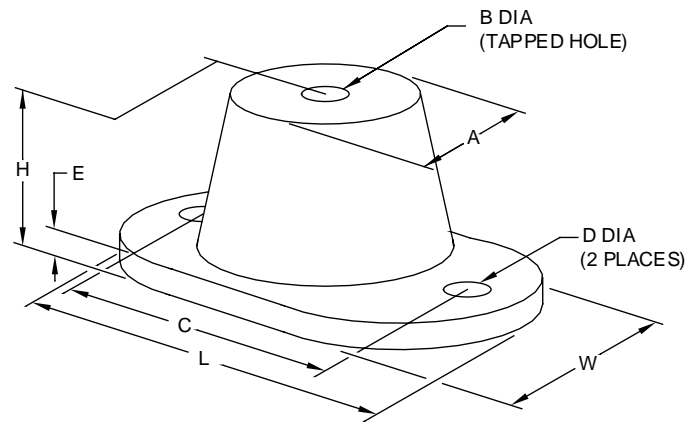
Isolator Type	Color	Rated Deflection lbs (kg)	Rated Deflection in (mm)	L in (mm)	W in (mm)	A in (mm)	B in (mm)	C in (mm)	D in (mm)	E in (mm)	H in (mm)
RDA-55	Yellow	55 (25)	0.40 (10)	3.19 (81)	1.81 (46)	1.25 (32)	0.31 (8)	2.38 (60)	0.34 (9)	0.19 (5)	1.50 (38)
RDA-125	Blue	125 (57)	0.40 (10)	3.19 (81)	1.81 (46)	1.25 (32)	0.31 (8)	2.38 (60)	0.34 (9)	0.19 (5)	1.50 (38)
RDB-120	Orange	120 (54)	0.50 (13)	3.88 (98)	2.38 (60)	1.75 (44)	0.38 (10)	3.00 (76)	0.34 (9)	0.25 (6)	1.75 (44)
RDB-220	Green	220 (100)	0.50 (13)	3.88 (98)	2.38 (60)	1.75 (44)	0.38 (10)	3.00 (76)	0.34 (9)	0.25 (6)	1.75 (44)
RDB-375	Blue	375 (170)	0.50 (13)	3.88 (98)	2.38 (60)	1.75 (44)	0.38 (10)	3.00 (76)	0.34 (9)	0.25 (6)	1.75 (44)
RDC-250	Yellow	250 (113)	0.50 (13)	5.50 (140)	3.25 (83)	2.50 (64)	0.50 (13)	4.13 (105)	0.56 (14)	0.25 (6)	2.50 (64)
RDC-600	Blue	600 (272)	0.50 (13)	5.50 (140)	3.25 (83)	2.50 (64)	0.50 (13)	4.13 (105)	0.56 (14)	0.25 (6)	2.50 (64)
RDC-1100	White	1100 (499)	0.50 (13)	5.50 (140)	3.25 (83)	2.50 (64)	0.50 (13)	4.13 (105)	0.56 (14)	0.25 (6)	2.50 (64)
RDD-2250	Red	2250 (1021)	0.50 (13)	6.25 (159)	4.63 (118)	3.75 (95)	0.50 (13)	5.00 (127)	0.56 (14)	0.38 (10)	2.75 (70)
RDD-3000	Green	3000 (1361)	0.50 (13)	6.25 (159)	4.63 (118)	3.75 (95)	0.50 (13)	5.00 (127)	0.56 (14)	0.38 (10)	2.75 (70)
RDD-4000	Gray	4000 (1814)	0.50 (13)	6.25 (159)	4.63 (118)	3.75 (95)	0.50 (13)	5.00 (127)	0.56 (14)	0.38 (10)	2.75 (70)

## Specifications

Vibration isolators shall be neoprene, molded from oil-resistant compounds, with cast-in-top steel load transfer plate for bolting to supported equipment, and a bolt-down plate with holes provided for anchoring to supporting structure. Bottom surfaces shall have non-skid ribs.

Neoprene vibration isolators shall have minimum operating static deflections as shown on the Vibration Isolation Schedule or as indicated on the project documents but not exceeding published load capabilities.

Neoprene vibration isolators shall be Model RD, as manufactured by Kinetics Noise Control, Inc.



**United States**  
6300 Irelan Place  
P.O. Box 655  
Dublin, Ohio 43017  
Phone: 614-889-0480  
Fax: 614-889-0540

**Canada**  
1720 Meyerside Drive  
Mississauga, Ontario  
L5T 1A3  
Phone: 905-670-4922  
Fax: 905-670-1698

[www.kineticsnoise.com](http://www.kineticsnoise.com)  
[sales@kineticsnoise.com](mailto:sales@kineticsnoise.com)

Kinetics Noise Control, Inc. is continually upgrading the quality of our products. We reserve the right to make changes to this and all products without notice.