

# FLSS 51 mm DEFLECTION SEISMIC ISOLATOR

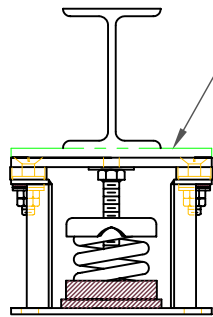
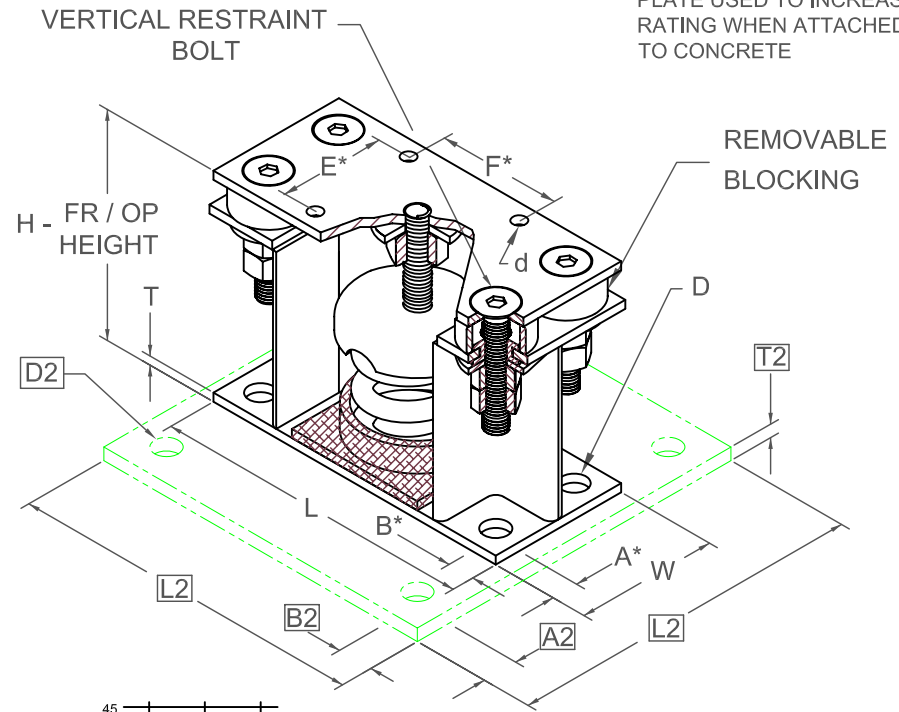
S-I UNITS (mm AND kg)

TYPE	L	W	T	A	B	D	E	F	d	H
2-100/1975	254	127	8	19	19	17	70	70	14	203

A2, B2, L2, T2, D2 DIMENSIONS REFER TO OPTIONAL BASE-PLATE USED TO INCREASE RATING WHEN ATTACHED TO CONCRETE

STANDARD RATINGS		SPRING COIL					
TYPE	SIZE	COLOR		FREE		RATED	
		OUTER	INNER	HT.	O.D.	LOAD	DEFL.
FLSS	2-100	GRAY		155	89	45	51
FLSS	2-250	BLUE		155	89	113	51
FLSS	2-500	GREEN		155	89	227	51
FLSS	2-750	BLACK		155	89	340	51
FLSS	2-995	ORANGE		155	89	451	51
FLSS	2-1400	ORANGE	GREEN	155	89	635	51
FLSS	2-1600	RED		155	89	726	51
FLSS	2-1975	RED	GREEN	155	89	896	50

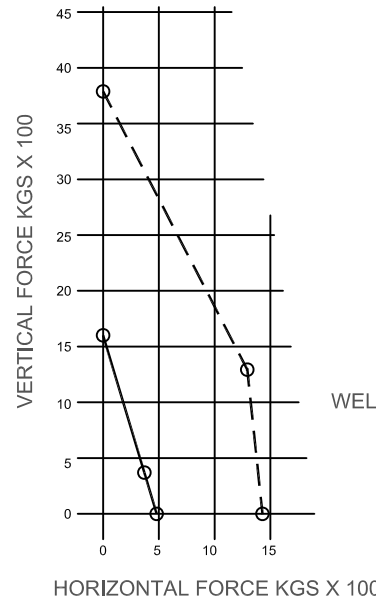
2-100/1975 REQUIRES 016 DIA. x 102 MIN. EMBED ANCHORS IN CONCRETE (ALLOWABLE LOADS BASED ON 21 MPa MIN CONCRETE)  
2-100/1975 ANCHOR BOLT TORQUE - 102 N-M, PULL TEST - 1211 kg



IF EQUIP SUPPORT STEEL IS 90° TO THE LONG ISOLATOR AXIS, AN ADD'L PLATE EQUAL IN THICKNESS TO THE TOP PLATE IS REQUIRED

### SPECIFICATIONS:

- VERTICALLY AND Laterally RESTRAINED SPRING ISOLATOR WITH CONSTANT FREE AND OPERATING HEIGHT AND REPLACEABLE NEOPRENE SNUBBING ELEMENTS.
- MINIMUM COIL OVERLOAD OF 50%.
- MINIMUM Kx/Ky RATIO OF 1.0.
- ALL ELEMENTS SAFE AT SOLID LOADING.
- POWDER COATED COILS AND HOT DIPPED GALVANIZED BRACKET.
- HOUSINGS MAY BE USED FOR BLOCKING DURING EQUIPMENT ERECTION.



\*ALL MOUNTING BOLT PATTERNS SYMMETRICAL ABOUT ISOLATOR CENTER-LINE

WELDED OR THROUGH BOLTED - - - -  
ANCHORED TO CONCRETE - - - -

Computed horiz and vert seismic load combinations must fall within the restraint capacity envelope. Contact KNC for bolted to steel data.



KINETICS NOISE CONTROL, INC  
6300 IRELAN PL,  
DUBLIN, OH 43017 USA  
Ph: 614 889-0480, Fax: 614 889-0540  
www.kineticsnoise.com

Model:  
**FLSS-2-100 / 1975**

By: **JMJ**  
Date: **07/12/02**  
Revised: **05/04/06 / BB**

Drawing No:  
**S-01.22-21S METRIC**