

FLSS 25 mm DEFLECTION SEISMIC ISOLATOR

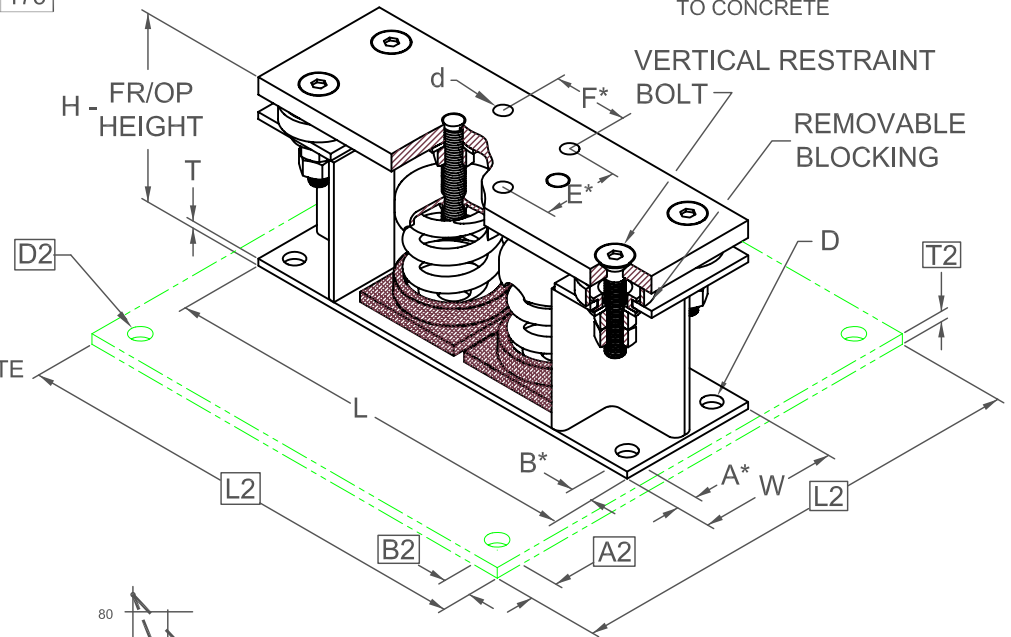
S-I UNITS (mm AND kg)

| TYPE | L | W | T | A | B | D | E | F | d | H |
|-------------|-----|-----|----|----|----|----|----|----|----|-----|
| 1-2500/7000 | 387 | 127 | 10 | 19 | 19 | 17 | 70 | 70 | 14 | 175 |

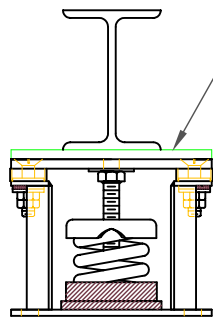
A2, B2, L2, T2, D2 DIMENSIONS REFER TO OPTIONAL BASE-PLATE USED TO INCREASE RATING WHEN ATTACHED TO CONCRETE

| STANDARD RATINGS | | SPRING COIL | | | | | |
|------------------|--------|-------------|-------|------|------|-------|-------|
| TYPE | SIZE | COLOR | | FREE | | RATED | |
| | | OUTER | INNER | HT. | O.D. | LOAD | DEFL. |
| FLSS | 1-2500 | BROWN | | 107 | 76 | 1134 | 28 |
| FLSS | 1-3400 | ORANGE | | 107 | 76 | 1542 | 24 |
| FLSS | 1-4400 | ORANGE | GRAY | 107 | 76 | 1996 | 26 |
| FLSS | 1-4930 | BLUE | | 107 | 76 | 2236 | 25 |
| FLSS | 1-5730 | BLUE | GRAY | 107 | 76 | 2599 | 25 |
| FLSS | 1-7000 | BLUE | BROWN | 107 | 76 | 3175 | 25 |

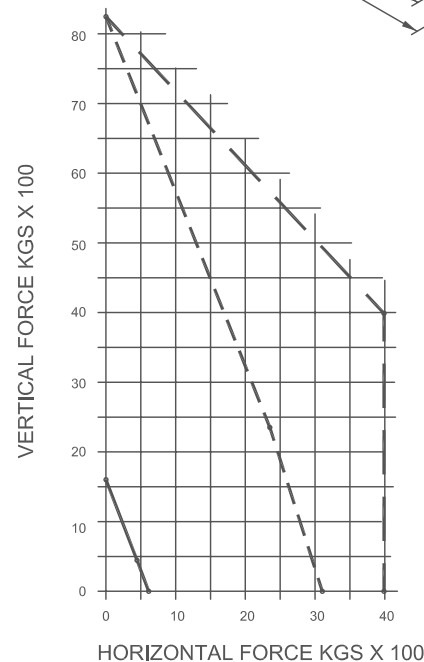
1-2500/7000 REQUIRES 016 DIA. x 102 MIN. EMBED ANCHORS IN CONCRETE (ALLOWABLE LOADS BASED ON 21 MPa MIN CONCRETE)
 1-2500/7000 ANCHOR BOLT TORQUE - 102 N-M, PULL TEST - 1211 kg



*ALL MOUNTING BOLT PATTERNS SYMMETRICAL ABOUT ISOLATOR CENTER-LINE



IF EQUIP SUPPORT STEEL IS 90° TO THE LONG ISOLATOR AXIS, AN ADD'L PLATE EQUAL IN THICKNESS TO THE TOP PLATE IS REQUIRED



WELDED TO STEEL - - -
 THROUGH BOLTED - · - · -
 ANCHORED TO CONCRETE ———

Computed horiz and vert seismic load combinations must fall within the restraint capacity envelope. Contact KNC for bolted to steel data.

SPECIFICATIONS:

- VERTICALLY AND Laterally RESTRAINED SPRING ISOLATOR WITH CONSTANT FREE AND OPERATING HEIGHT AND REPLACEABLE NEOPRENE SNUBBING ELEMENTS.
- MINIMUM COIL OVERLOAD OF 50%.
- MINIMUM K_x/K_y RATIO OF 1.0.
- ALL ELEMENTS SAFE AT SOLID LOADING.
- POWDER COATED COILS AND HOT DIPPED GALVANIZED BRACKET.
- HOUSINGS MAY BE USED FOR BLOCKING DURING EQUIPMENT ERECTION.



KINETICS NOISE CONTROL, INC
 6300 IRELAN PL,
 DUBLIN, OH 43017 USA
 Ph: 614 889-0480, Fax: 614 889-0540
 www.kineticsnoise.com

Model:
**FLSS-1-
 2500 / 7000**

By: **JMJ**
 Date: **07/12/02**
 Revised: **05/04/06 / PWM**

Drawing No:
**S-01.22-12S
 METRIC**