

FLSS 25 mm DEFLECTION SEISMIC ISOLATOR

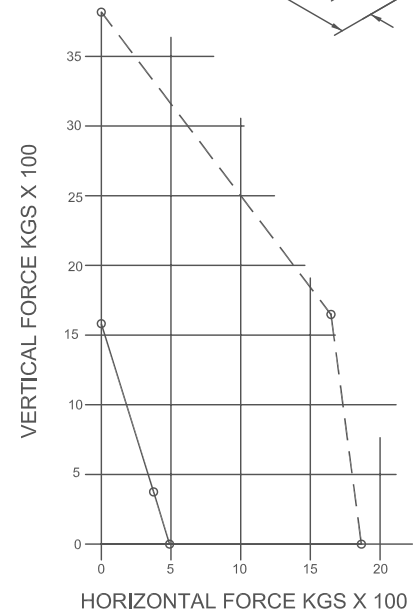
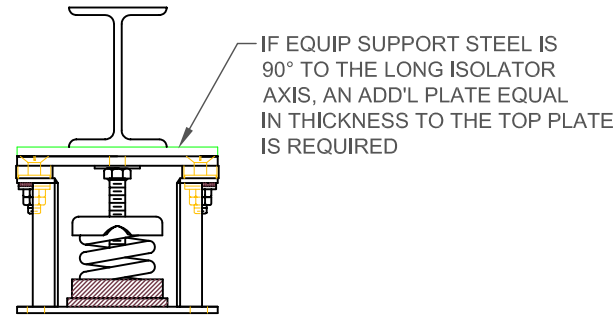
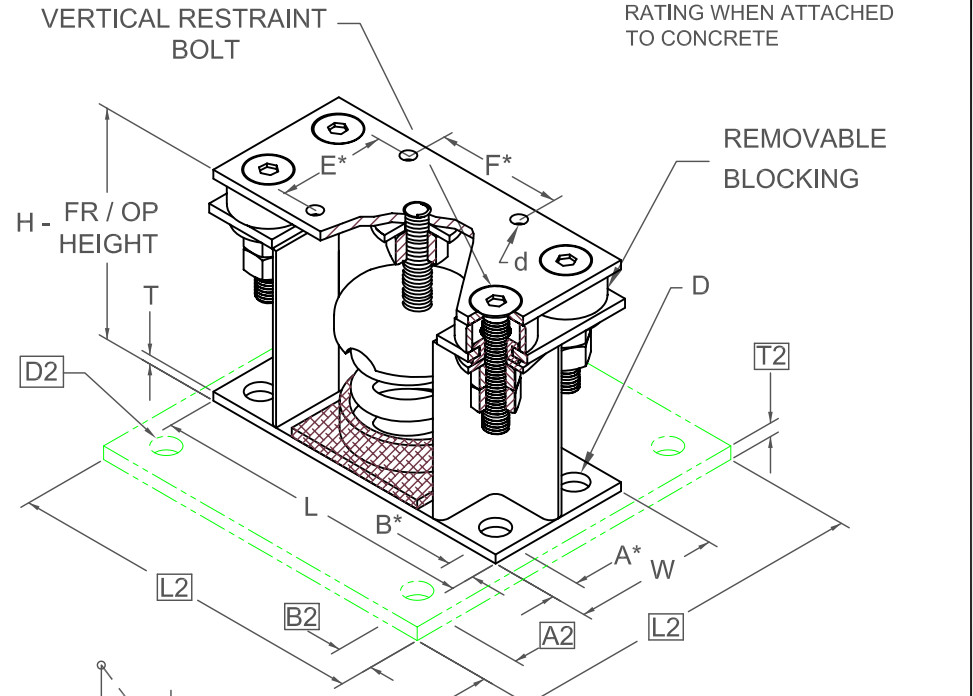
S-I UNITS (mm AND kg)

A2, B2, L2, T2, D2 DIMENSIONS REFER TO OPTIONAL BASE-PLATE USED TO INCREASE RATING WHEN ATTACHED TO CONCRETE

TYPE	L	W	T	A	B	D	E	F	d	H
1-250/3500	229	102	8	19	19	17	70	70	14	159

STANDARD RATINGS		SPRING COIL					
TYPE	SIZE	COLOR		FREE		RATED	
		OUTER	INNER	HT.	O.D.	LOAD	DEFL.
FLSS	1-250	BLUE		107	76	113	45
FLSS	1-450	GREEN		107	76	204	39
FLSS	1-625	BLACK		107	76	283	37
FLSS	1-800	GRAY		107	76	363	33
FLSS	1-1000	RED		107	76	454	29
FLSS	1-1250	BROWN		107	76	567	28
FLSS	1-1700	ORANGE		107	76	771	24
FLSS	1-2200	ORANGE	GRAY	107	76	998	26
FLSS	1-2465	BLUE		107	76	1118	25
FLSS	1-2865	BLUE	GRAY	107	76	1300	25
FLSS	1-3500	BLUE	BROWN	107	76	1588	25

1-250/3500 REQUIRES 016 DIA. x 102 MIN. EMBED ANCHORS IN CONCRETE (ALLOWABLE LOADS BASED ON 21 MPa MIN CONCRETE)
 1-250/3500 ANCHOR BOLT TORQUE - 102 N-M, PULL TEST - 1211 kg



*ALL MOUNTING BOLT PATTERNS SYMMETRICAL ABOUT ISOLATOR CENTER-LINE

WELDED OR THROUGH BOLTED - - -
 ANCHORED TO CONCRETE ———

Computed horiz and vert seismic load combinations must fall within the restraint capacity envelope. Contact KNC for bolted to steel data.

SPECIFICATIONS:

- VERTICALLY AND Laterally RESTRAINED SPRING ISOLATOR WITH CONSTANT FREE AND OPERATING HEIGHT AND REPLACEABLE NEOPRENE SNUBBING ELEMENTS.
- MINIMUM COIL OVERLOAD OF 50%.
- MINIMUM Kx/Ky RATIO OF 1.0.
- ALL ELEMENTS SAFE AT SOLID LOADING.
- POWDER COATED COILS AND HOT DIPPED GALVANIZED BRACKET.
- HOUSINGS MAY BE USED FOR BLOCKING DURING EQUIPMENT ERECTION.



KINETICS NOISE CONTROL, INC
 6300 IRELAN PL,
 DUBLIN, OH 43017 USA
 Ph: 614 889-0480, Fax: 614 889-0540
 www.kineticsnoise.com

Model:
FLSS-1-250 / 3500

By: **JMJ**
 Date: **07/09/02**
 Revised: **05/04/06 / PWM**

Drawing No:
S-01.22-11S METRIC