

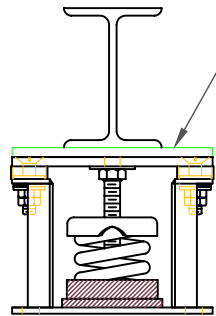
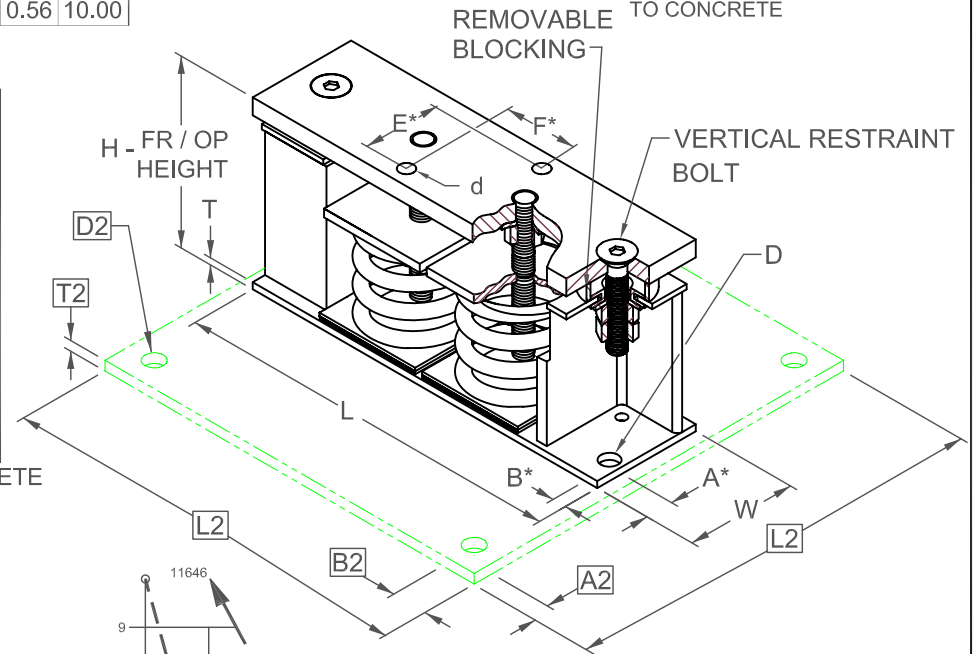
## FLS 2" DEFLECTION ISOLATOR IP UNITS (INCHES AND POUNDS)

A2, B2, L2, T2, D2 DIMENSIONS REFER TO OPTIONAL BASE-PLATE USED TO INCREASE RATING WHEN ATTACHED TO CONCRETE

TYPE	L	W	T	A	B	D	E	F	d	H
2-4000/9000	17.50	6.00	0.38	1.25	1.00	0.69	2.75	2.75	0.56	10.00

STANDARD RATINGS		SPRING COIL						
TYPE	SIZE	COLOR			FREE HT.	O.D.	RATED	
		OUTER	INNER1	INNER2			LOAD	DEFL.
FLS	2-4000	ORANGE			7.00	5.00	4000	2.00
FLS	2-5000	BLUE			7.00	5.00	5000	2.00
FLS	2-5500	BLUE	BLUE		7.00	5.00	5500	2.00
FLS	2-6050	BLUE	GREEN		7.00	5.00	6050	2.02
FLS	2-6500	BLUE	BLACK		7.00	5.00	6500	2.00
FLS	2-7000	BLUE	ORANGE		7.00	5.00	7000	2.00
FLS	2-7800	BLUE	ORANGE	GREEN	7.00	5.00	7800	2.00
FLS	2-8200	BLUE	RED		7.00	5.00	8200	2.00
FLS	2-9000	BLUE	RED	GREEN	7.00	5.00	9000	2.00

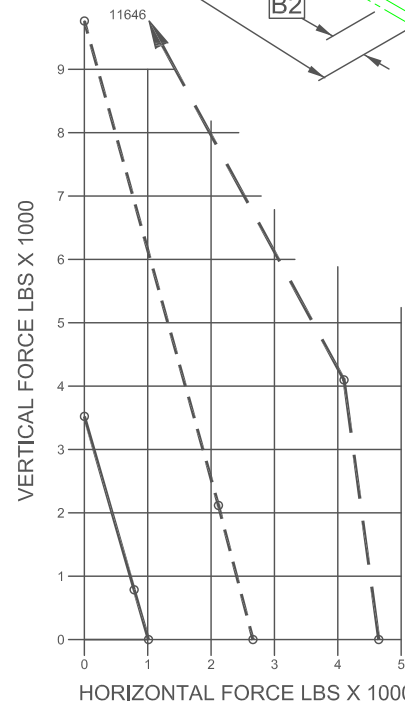
2-4000/9000 REQUIRES 0.62 DIA. x 4.00 MIN. EMBED ANCHORS IN CONCRETE  
(ALLOWABLE LOADS BASED ON 3000 PSI MIN CONCRETE)  
2-4000/9000 ANCHOR BOLT TORQUE - 75 FT-LB, PULL TEST - 2670 LB



IF EQUIP SUPPORT STEEL IS 90° TO THE LONG ISOLATOR AXIS, AN ADD'L PLATE EQUAL IN THICKNESS TO THE TOP PLATE IS REQUIRED

### SPECIFICATIONS:

- VERTICALLY AND Laterally RESTRAINED SPRING ISOLATOR WITH CONSTANT FREE AND OPERATING HEIGHT AND REPLACEABLE NEOPRENE SNUBBING ELEMENTS.
- MINIMUM COIL OVERLOAD OF 50%.
- MINIMUM K<sub>x</sub>/K<sub>y</sub> RATIO OF 1.0.
- ALL ELEMENTS SAFE AT SOLID LOADING.
- POWDER COATED COILS AND HOT DIPPED GALVANIZED BRACKET.
- HOUSINGS MAY BE USED FOR BLOCKING DURING EQUIPMENT ERECTION.



\*ALL MOUNTING BOLT PATTERNS SYMMETRICAL ABOUT ISOLATOR CENTER-LINE

WELDED TO STEEL — — —  
THROUGH BOLTED - - - -  
ANCHORED TO CONCRETE — — —

Computed horiz and vert seismic load combinations must fall within the restraint capacity envelope. Contact KNC for bolted to steel data.



KINETICS NOISE CONTROL, INC  
6300 IRELAN PL,  
DUBLIN, OH 43017 USA  
Ph: 614 889-0480, Fax: 614 889-0540  
www.kineticsnoise.com

Model:  
**FLS-2-  
4000 / 9000**

By: **JMJ**  
Date: **07/09/02**  
Revised: **5/5/06 / PWM**

Drawing No:  
**S-01.22-23**