

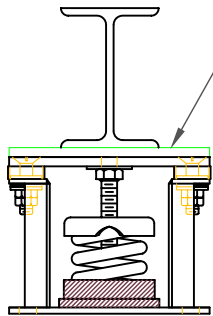
FLS 51 mm DEFLECTION ISOLATOR S-I UNITS (mm AND kg)

A2, B2, L2, T2, D2 DIMENSIONS REFER TO OPTIONAL BASE-PLATE USED TO INCREASE RATING WHEN ATTACHED TO CONCRETE

TYPE	L	W	T	A	B	D	E	F	d	H
2-4000/9000	445	152	10	32	25	17	70	70	14	254

STANDARD RATINGS		SPRING COIL						
TYPE	SIZE	COLOR			FREE	O.D.	RATED	
		OUTER	INNER1	INNER2	HT.		LOAD	DEFL.
FLS	2-4000	ORANGE			178	127	1814	51
FLS	2-5000	BLUE			178	127	2268	51
FLS	2-5500	BLUE	BLUE		178	127	2495	51
FLS	2-6050	BLUE	GREEN		178	127	2744	51
FLS	2-6500	BLUE	BLACK		178	127	2948	51
FLS	2-7000	BLUE	ORANGE		178	127	3175	51
FLS	2-7800	BLUE	ORANGE	GREEN	178	127	3538	51
FLS	2-8200	BLUE	RED		178	127	3719	51
FLS	2-9000	BLUE	RED	GREEN	178	127	4082	51

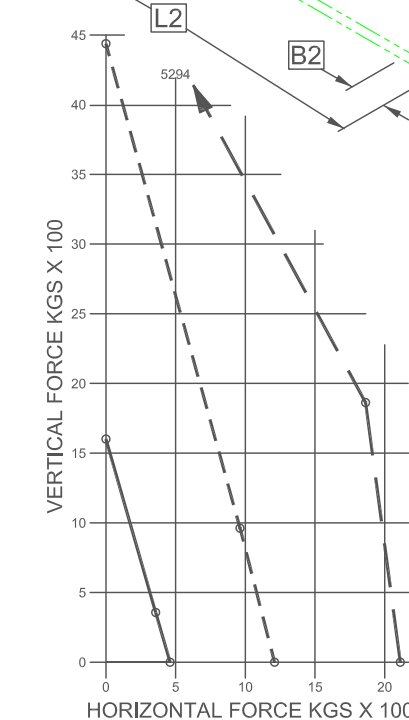
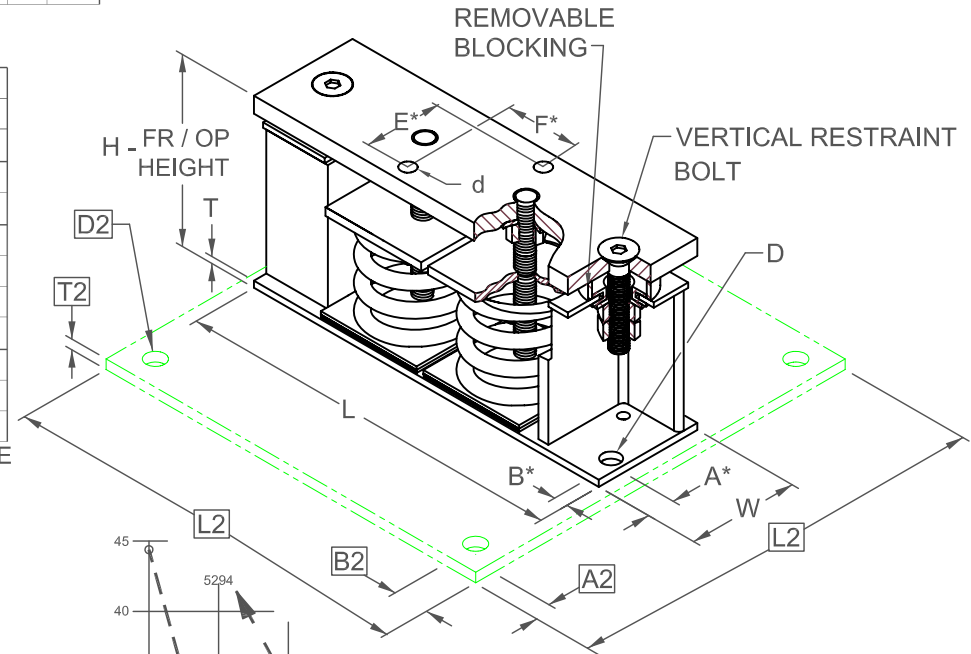
2-4000/9000 REQUIRES 16 DIA x 102 MIN EMBED ANCHORS IN CONCRETE (ALLOWABLE LOADS BASED ON 21 MPa MIN CONCRETE)
2-4000/9000 ANCHOR BOLT TORQUE - 102 N-M, PULL TEST - 1211 KG



IF EQUIP SUPPORT STEEL IS 90° TO THE LONG ISOLATOR AXIS, AN ADD'L PLATE EQUAL IN THICKNESS TO THE TOP PLATE IS REQUIRED

SPECIFICATIONS:

- VERTICALLY AND Laterally RESTRAINED SPRING ISOLATOR WITH CONSTANT FREE AND OPERATING HEIGHT AND REPLACEABLE NEOPRENE SNUBBING ELEMENTS.
- MINIMUM COIL OVERLOAD OF 50%.
- MINIMUM K_x/K_y RATIO OF 1.0.
- ALL ELEMENTS SAFE AT SOLID LOADING.
- POWDER COATED COILS AND HOT DIPPED GALVANIZED BRACKET.
- HOUSINGS MAY BE USED FOR BLOCKING DURING EQUIPMENT ERECTION.



*ALL MOUNTING BOLT PATTERNS SYMMETRICAL ABOUT ISOLATOR CENTER-LINE

WELDED TO STEEL
THROUGH BOLTED
ANCHORED TO CONCRETE

Computed horiz and vert seismic load combinations must fall within the restraint capacity envelope. Contact KNC for bolted to steel data.



KINETICS NOISE CONTROL, INC
6300 IRELAN PL,
DUBLIN, OH 43017 USA
Ph: 614 889-0480, Fax: 614 889-0540
www.kineticsnoise.com

Model:
**FLS-2-
4000 / 9000**

By: **JMJ**
Date: **07/09/02**
Revised: **5/5/06 / PWM**

Drawing No:
S-01.22-23
METRIC