

FLS 25 mm DEFLECTION ISOLATOR

S-I UNITS (mm AND kg)

TYPE	L	W	T	A	B	D	E	F	d	H
1-2500/7000	356	102	10	25	13	17	70	70	14	175

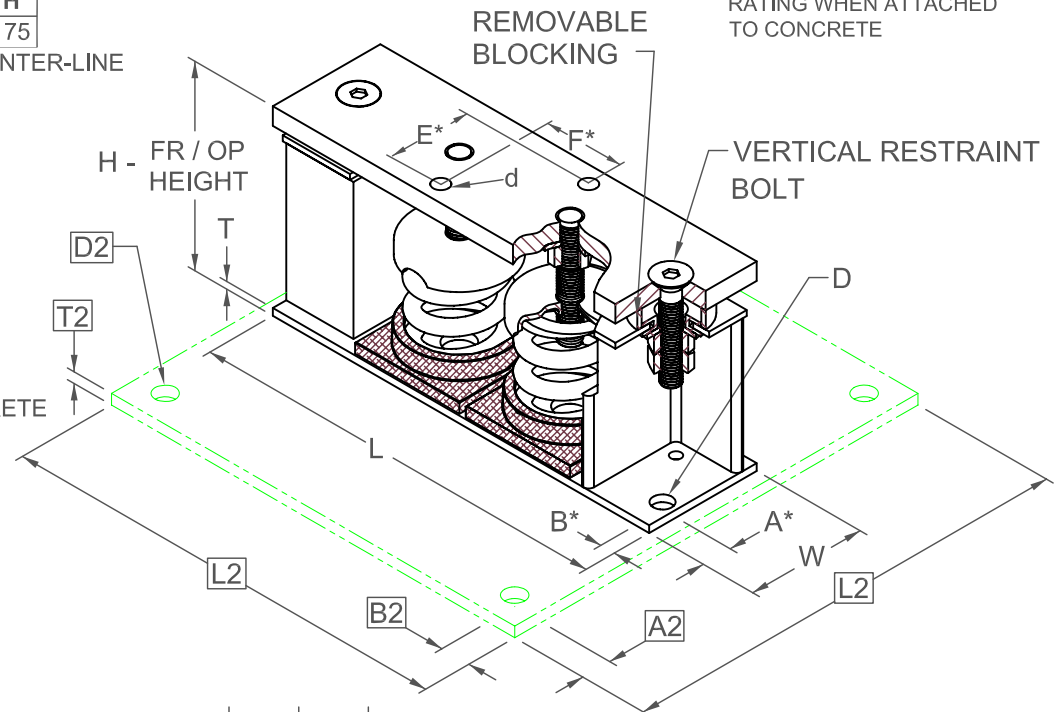
*ALL MOUNTING BOLT PATTERNS SYMMETRICAL ABOUT ISOLATOR CENTER-LINE

STANDARD RATINGS		SPRING COIL					
TYPE	SIZE	COLOR		FREE		RATED	
		OUTER	INNER	HT.	O.D.	LOAD	DEFL.
FLS	1-2500	BROWN		107	76	1134	28
FLS	1-3400	ORANGE		107	76	1542	24
FLS	1-4400	ORANGE	GRAY	107	76	1996	26
FLS	1-4930	BLUE		107	76	2236	25
FLS	1-5730	BLUE	GRAY	107	76	2599	25
FLS	1-7000	BLUE	BROWN	107	76	3175	25

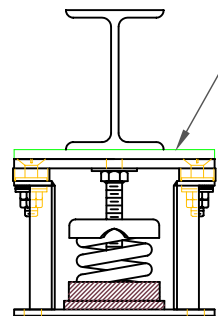
1-2500/7000 REQUIRES 016 DIA. x 102 MIN. EMBED ANCHORS IN CONCRETE
(ALLOWABLE LOADS BASED ON 21 MPa MIN CONCRETE)

1-2500/7000 ANCHOR BOLT TORQUE - 102 N-M, PULL TEST - 1211 kg

A2, B2, L2, T2, D2 DIMENSIONS REFER TO OPTIONAL BASE-PLATE USED TO INCREASE RATING WHEN ATTACHED TO CONCRETE



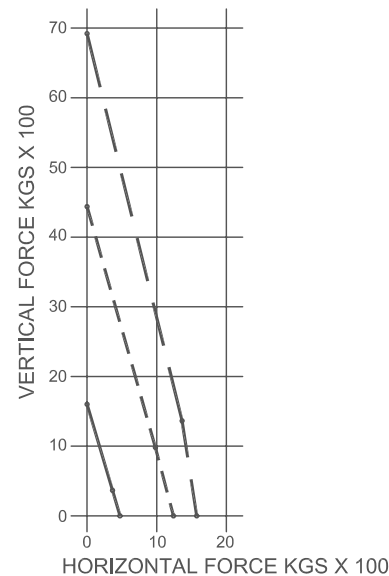
*ALL MOUNTING BOLT PATTERNS SYMMETRICAL ABOUT ISOLATOR CENTER-LINE



IF EQUIP SUPPORT STEEL IS 90° TO THE LONG ISOLATOR AXIS, AN ADD'L PLATE EQUAL IN THICKNESS TO THE TOP PLATE IS REQUIRED

SPECIFICATIONS:

- VERTICALLY AND Laterally RESTRAINED SPRING ISOLATOR WITH CONSTANT FREE AND OPERATING HEIGHT AND REPLACEABLE NEOPRENE SNUBBING ELEMENTS.
- MINIMUM COIL OVERLOAD OF 50%.
- MINIMUM Kx/Ky RATIO OF 1.0.
- ALL ELEMENTS SAFE AT SOLID LOADING.
- POWDER COATED COILS AND HOT DIPPED GALVANIZED BRACKET.
- HOUSINGS MAY BE USED FOR BLOCKING DURING EQUIPMENT ERECTION.



WELDED TO STEEL ---
THROUGH BOLTED ---
ANCHORED TO CONCRETE ———

Computed horiz and vert seismic load combinations must fall within the restraint capacity envelope. Contact KNC for bolted to steel data.



KINETICS NOISE CONTROL, INC
6300 IRELAN PL,
DUBLIN, OH 43017 USA
Ph: 614 889-0480, Fax: 614 889-0540
www.kineticsnoise.com

Model:
**FLS-1-
2500 / 7000**

By: **JMJ**
Date: **07/09/02**
Revised: **4/14/06 / PWM**

Drawing No:
S-01.22-12
METRIC