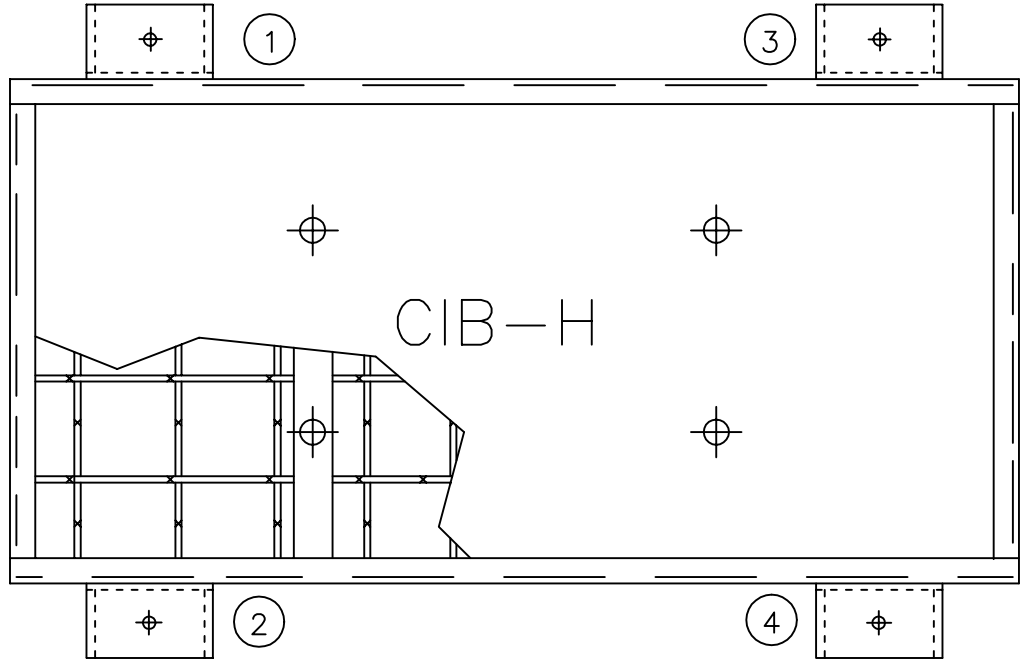


# INSTALLATION INSTRUCTIONS FOR KINETICS MODEL CIB INERTIA BASE



1. Place inertia base frame in its operating location on a sheet of poly with the rebar located toward the bottom of the base.

2. Locate the anchor bolts in the bolting templates provided with the base frame. (See bolt projection below.) If KNC is to provide the anchor bolts, they will be boxed with the isolators. (In some cases templates may not be provided.)

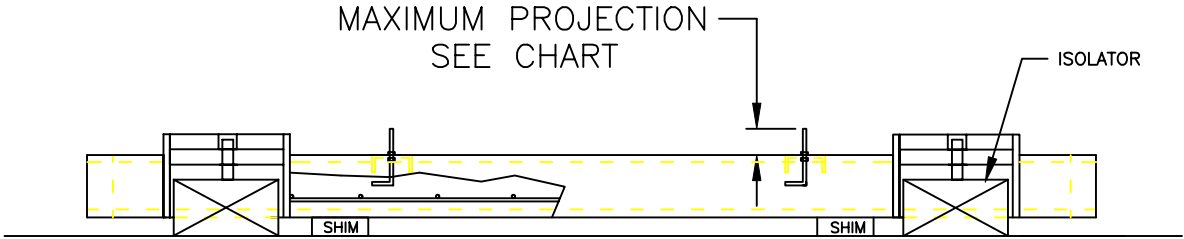
3. After the anchor bolts have been located, check to insure they match equipment bolting pattern. Then fill the base with concrete and let it cure.

4. When concrete has completely cured, lift up the base high enough to place the isolators under the brackets. Do not lift the entire weight of the base on one bracket.

5. Place a shim next to each bracket between the inertia base and the housekeeping pad. Check submittal drawing for correct floor clearance to size shim.

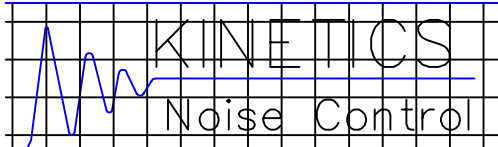
6. Equipment can now be installed on the base.

7. When equipment is mounted and ready to run, the isolators can be adjusted in sequence as follows; turn leveling bolt two to three turns counter clockwise on each isolator until the equipment just comes free from the shim. The blocks may be removed.



## ANCHOR BOLTS

DIA	MAX PROJECTION
3/8	2.5
1/2	2.5
5/8	3.38
3/4	3.25



TAG: CIB-H  
INSTALLATION INSTRUCTIONS

DATE  
11-23-98

DRAWN BY  
TJG

DRAWING NO.  
INS 50B

KNC#  
REV