

KINETICS™

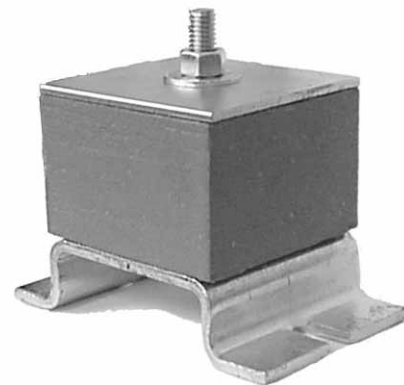
Fiberglass Isolators Model AC

Description

Model AC Fiberglass Isolators consist of a molded inorganic fiberglass isolation pad bonded to a steel load transfer plate and to a formed steel bolt-down bracket and include an equipment anchor bolt with a neoprene grommet to prevent metal-to-metal contact. Fiberglass pads are fine (0.00027"/6.8 microns diameter) bonded annealed glass fibers which are stabilized by pre-compressing the material during manufacture and then coated with a flexible moisture-impervious elastomeric membrane. Fiberglass is unique in that the natural frequency is constant over a wide operating load range and the stiffness increases proportionately with load applied. Model AC Fiberglass Isolators are available in sizes with capacities from 40 to 900 lbs. (18 kg-409 kg) and deflections of 0.18" to 0.70" (4mm-18mm). Kinetics Model AC Isolators are recommended for the isolation of vibration produced by utility ventilating fans, vane axial fans, high speed motors, roof-mounted exhaust fans, and similar mechanical equipment.

Features

- Inorganic fiberglass media
- Flexible elastomeric coating
- Constant natural frequency over a wide load range
- Predictable dynamic response
- High energy dissipation
- Controlled viscous damping
- Load capacities 40 lbs. to 900 lbs. (18kg-409kg)
- Rated static deflection 0.18" to 0.70" (4mm-18mm)
- Steel load transfer plate
- Steel bolt and hold-down support bracket



Application

Kinetics Model AC Fiberglass Isolators can be used for any application requiring isolation of audible frequency vibration, or noise, or for vibration isolation of mechanical equipment with lowest operating speeds of 1750 RPM when mounted on a grade-supported slab or pier.

Model AC isolators are typically used when the predictable dynamic response and permanent load support characteristics of fiberglass are desired in conjunction with a bolt-down and vertical lift control feature.

Typical uses of Model AC isolators include the support and isolation of utility ventilating fans, vane axial fans, motors, roof-mounted exhaust fans, and similar mechanical equipment.

Special application of Model AC isolators have included use as both an isolator and wind lift hold-down support for isolated precast concrete roof systems used to reduce transmitted noise from fly-over aircraft.

Use Model AC mounts when Kinetics fiberglass isolators are recommended and it is desirable to bolt equipment to supporting structures.

Specifications

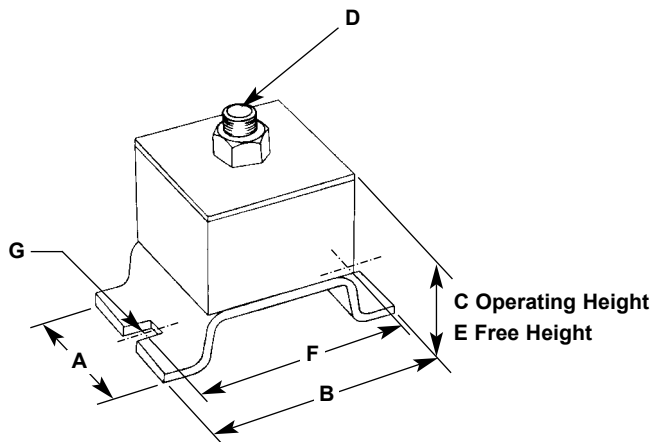
Vibration isolators shall be precompressed molded fiberglass pads individually coated with flexible, moisture-impervious elastomeric membrane. Vibration isolation pads shall be molded from glass fibers with fiber diameters not exceeding 0.00027" (6.8 microns) and with a modulus of elasticity of 10.5 million PSI (750,00 kg per sq. cm).

Natural frequency of fiberglass vibration isolators shall be essentially constant for the operating load range of the supported equipment.

Vibration isolators shall be bonded to a steel load transfer plate and a formed steel bolt-down bracket and shall also include an equipment mounting bolt with a neoprene grommet to prevent metal-to-metal contact.

Vibration isolators shall be selected by the manufacturer for each specific application to comply with deflection requirements as shown on the Vibration Isolation Schedule or as indicated on the project documents.

Vibration isolators shall be model AC, as manufactured by Kinetics Noise Control, Inc.



Isolator Type	Capacity Range	Maximum Deflection	Dimensions						
			A	B	C*	D	E	F	G
AC-221L	40-200 lbs.	0.27"	2.50"	4.75"	1.98"	0.38"	2.25"	3.75"	0.44"
AC-221Q	100-400 lbs.	0.18"	2.50"	4.75"	2.07"	0.38"	2.25"	3.75"	0.44"
AC-331L	90-450 lbs.	0.35"	3.00"	4.75"	1.90"	0.38"	2.25"	3.75"	0.44"
AC-331Q	225-900 lbs.	0.27"	3.00"	4.75"	1.98"	0.38"	2.25"	3.75"	0.44"
AC-222G	20-100 lbs.	0.69"	2.50"	4.75"	2.56"	0.38"	3.25"	3.75"	0.44"
AC-222L	40-200 lbs.	0.54"	2.50"	4.75"	2.71"	0.38"	3.25"	3.75"	0.44"
AC-222Q	100-400 lbs.	0.36"	2.50"	4.75"	2.89"	0.38"	3.25"	3.75"	0.44"
AC-332-L	90-450 lbs.	0.70"	3.00"	4.75"	2.55"	0.38"	3.25"	3.75"	0.44"
AC-332Q	225-900 lbs.	0.54"	3.00"	4.75"	2.71"	0.38"	3.25"	3.75"	0.44"
AC-221L	18-91 kg	6 mm	63 mm	121 mm	50 mm	9.6 mm	57 mm	95 mm	11 mm
AC-221Q	46-182 kg	4 mm	63 mm	121 mm	52 mm	9.6 mm	57 mm	95 mm	11 mm
AC-331L	41-205 kg	9 mm	75 mm	121 mm	48 mm	9.6 mm	57 mm	95 mm	11 mm
AC-331Q	102-409 kg	6 mm	75 mm	121 mm	50 mm	9.6 mm	57 mm	95 mm	11 mm
AC-222G	9-46 kg	17 mm	63 mm	121 mm	65 mm	9.6 mm	83 mm	95 mm	11 mm
AC-222L	18-91 kg	14 mm	63 mm	121 mm	69 mm	9.6 mm	83 mm	95 mm	11 mm
AC-222Q	46-182 kg	9 mm	63 mm	121 mm	73 mm	9.6 mm	83 mm	95 mm	11 mm
AC-332-L	41-205 kg	18 mm	75 mm	121 mm	65 mm	9.6 mm	83 mm	95 mm	11 mm
AC-332Q	102-409 kg	14 mm	75 mm	121 mm	69 mm	9.6 mm	83 mm	95 mm	11 mm

*Operating height varies with applied load.



United States 6300 Ireland Place P.O. Box 655 Dublin, Ohio 43017 Phone: 614-889-0480 Fax: 614-889-0540	Canada 1720 Meyerside Drive Mississauga, Ontario L5T 1A3 Phone: 905-670-4922 Fax: 905-670-1698
---	---

www.kineticsnoise.com
sales@kineticsnoise.com

Kinetics Noise Control, Inc. is continually upgrading the quality of our products. We reserve the right to make changes to this and all products without notice.