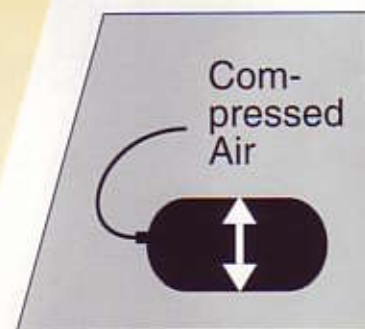
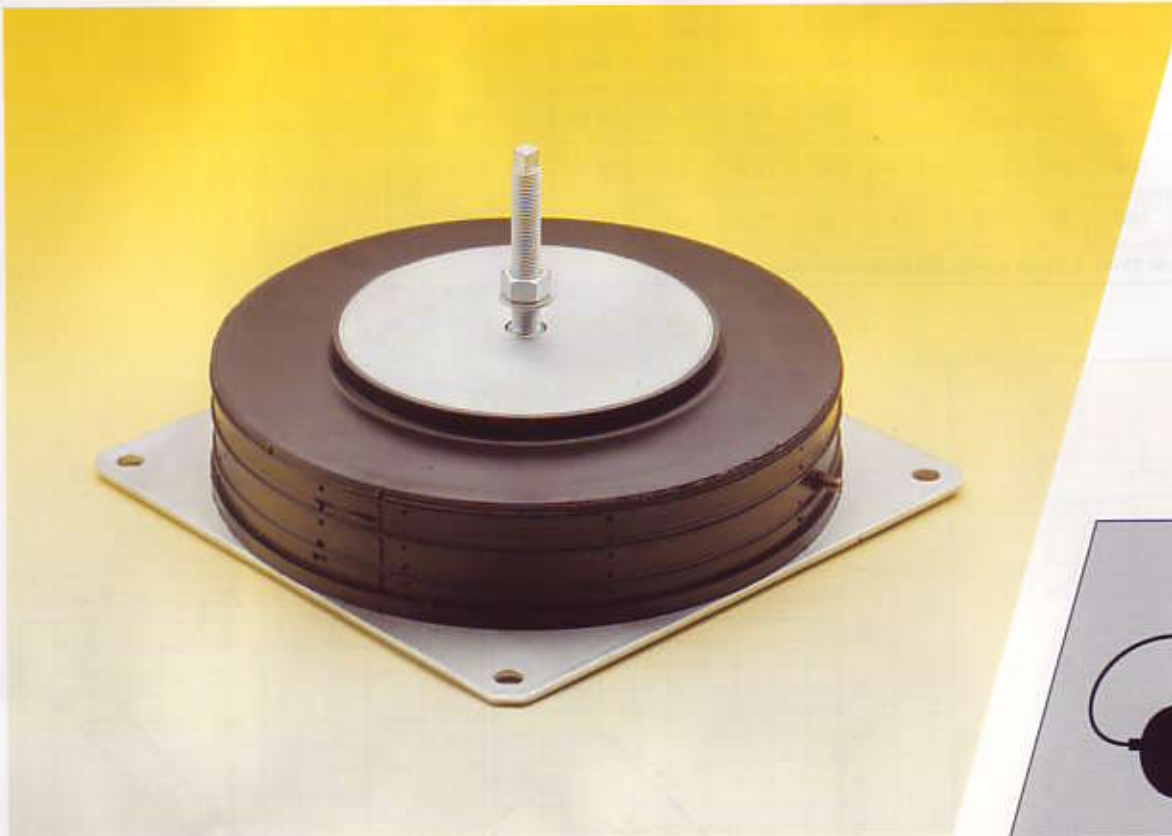


SLM-Series



Structure

Elastomer-metal-combination
with screwed-on bottom plate
air chamber made of elastomer,
reinforced by steel rings
air supply via car tire valve
8 sizes

Features

Active or passive support at low frequency
vertical and horizontal stiffness about 1:1
vibration isolation,
shock absorption max. amplitude 40 mm,
structure-borne sound absorption
anchor-free installation
operable even in pressure-relieved condition
load range 20 daN - 10 000 daN
natural frequency (stat.) 3 Hz - 5 Hz
natural frequency (stat.)
pressure-relieved approx. 8 Hz

Range of application

Measuring machines, plain table plates,
foundations, presses, automatic punching
machines, nipple machines, compressors, fans

Levelling

Levelling range +/- 6 mm,
air pressure control

Remarks

Self-controlled levelling system
available
mechanical-pneumatic system
electro-pneumatic system
reset time and accuracy depend on the
structure

Materials

Elastomer body made of CR grade with
high elasticity, oil resistant and non-aging
pressure and bottom plates made of galvani-
zed steel, screw 8.8 grade, galvanized

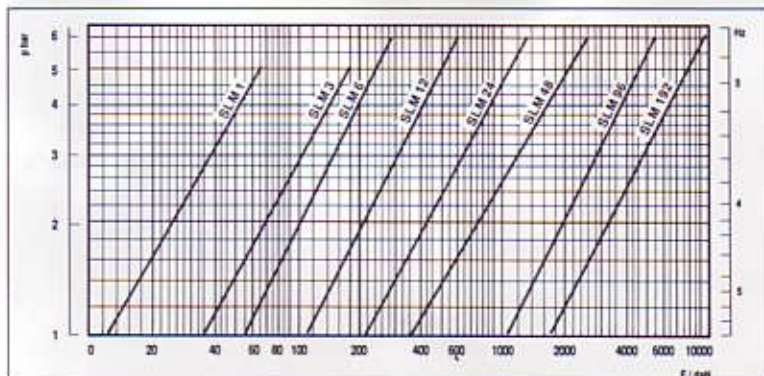
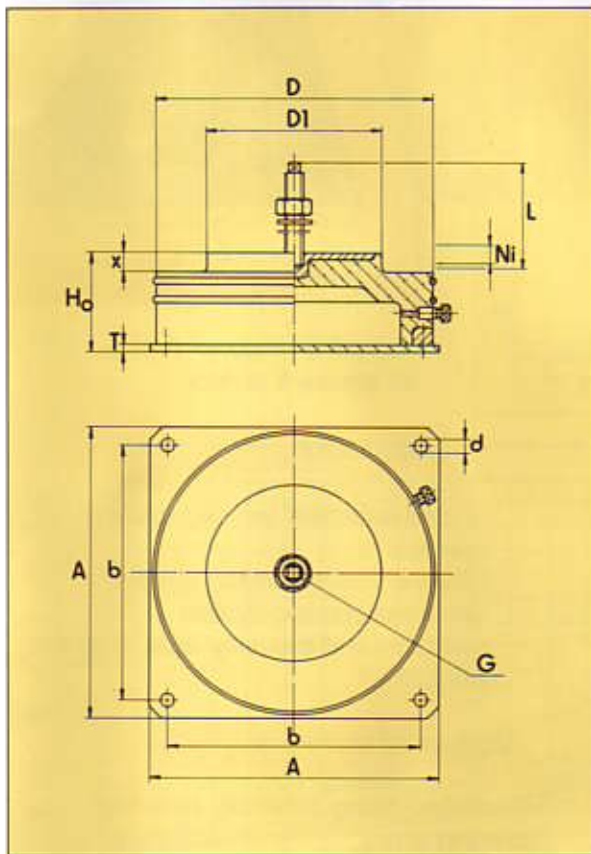
Scope of delivery

Pneumatic spring assembly including fastening
screw

Ordering example

Standard	SLM 48 A
Standard variants	SLM 48 A, screw length xx mm
Special types	acc. to customer's specifications

Dimension table Unit: mm	D	Ho	D1	G	L	Pedestal thickness (max.)	Ni	X	A	b	d	T	Weight kg	Load (max.) daN
SLM 1 A	73	65	28	M 10	80	50	+/- 5	12	75	60	7	3	0.3	65
SLM 3 A	105	65	52	M 12	100	65	+/- 5	12	105	89	7	3	0.7	180
SLM 6 A	127	90	60	M 12	100	65	+/- 6	15	130	108	7	3	1	280
SLM 12 A	172	90	96	M 12	100	65	+/- 6	15	175	153	7	3	1.8	600
SLM 24 A	245	90	138	M 16	120	75	+/- 6	15	255	215	14	5	5.4	1300
SLM 48 A	338	90	205	M 16	120	75	+/- 6	15	343	305	14	5	10.7	2600
SLM 96 A	468	90	300	M 24	130	75	+/- 6	15	470	406	20	6	29.1	5500
SLM 192 A	610	90	430	M 24	130	75	+/- 6	15	610	508	20	6	38.6	10000



EFFBE

SLM-D-Series



Structure

SLM pneumatic spring standard series with integrated viscose damper, DBP 38 19 770
4 sizes

Features

Reduction of the resonance step-up up to 70 % in case of vertical active supports
use in the resonance range permitted
load range 300 daN - 10 000 daN
natural frequency (stat.) 4 Hz - 7 Hz
(see also diagrams on the right page)

Range of application

Presses, automatic punching machines, nipple machines, compressors, packeting machines

Materials

The same type as SLM standard series, damper assembly designed as elastomer-metal-combination with viscose filling

Levelling

Levelling range +/- 6 mm,
air pressure control

Remarks

Self-controlled levelling system available
mechanical-pneumatic system
electro-pneumatic system
reset time and accuracy depend on the structure

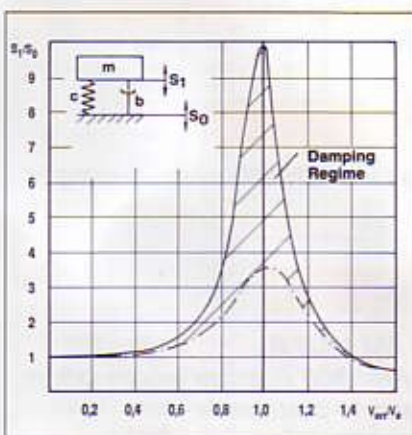
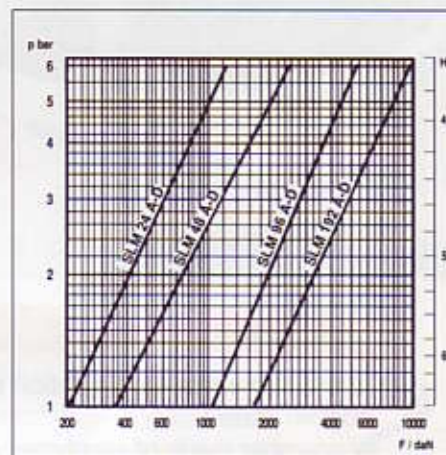
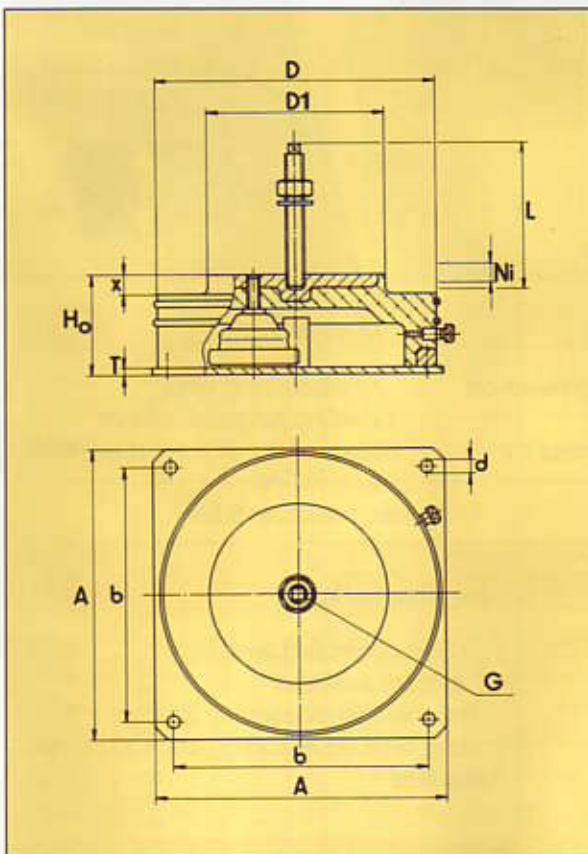
Scope of delivery

Pneumatic spring assembly including fastening screw

Ordering example

Standard	SLM 48 A-D1
Standard variants	SLM 48 A-D1 screw length xx mm
Special types	according to customer's specifications

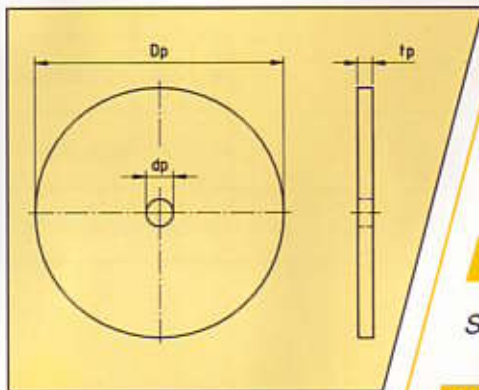
Dimension table Unit: mm	D	Ho	D1	G	L	Pedestal thickness (max.)	Ni	X	A	b	d	T	Weight kg	Load (max.) daN
SLM 24 A - D1	245	90	138	M 16	120	75	+/- 6	15	255	215	14	5	6.4	1300
SLM 48 A - D1	338	90	205	M 16	120	75	+/- 6	15	343	305	14	5	12.7	2600
SLM 96 A - D2	468	90	300	M 24	130	75	+/- 6	15	470	406	20	6	32	5500
SLM 192 A - D4	610	90	430	M 24	130	75	+/- 6	15	610	508	20	8	44	10000



EFFBE

SLM - Series

Accessoires



Assembling plate

Application

Safety rules says (in case of pressure leakage.) that the air element must totally be covered and level with the machine foot. If such a covering not guaranteed, using of assembling plate between machine foot and element is use recommended.

Material

Steel-plate / Surface silver painted (RAL 9006)

Ordering example

Assembling plate for AM 95
Special types

Typ 100
acc. to customer's
specifications

Assembling plate type	AM type	SLM type	Dp mm	dp mm	tp mm	weight kg
100	95	1	100	11	6	0,5
130	225	3/6	130	13	8	0,8
175	450	12	175	13	10	2,0
240	900	24	240	17	10	3,6
290	1800	-	290	17	10	5,5
380	3700	48	380	26	12	10,3
550	7500	96/192	550	26	15	28,0

Installation supplies

Air hose PU-4/6

Pump connection (hose plug-in nipple with valve)

Valve connection – suitable for air spring (VG 8)

Straight screw-in screwing 6/4 R 1/8"
(suitable for all air springs of the type AM and SLM 24 and above)

T screwing 6/4

Cross screwing 6/4

EFFBE